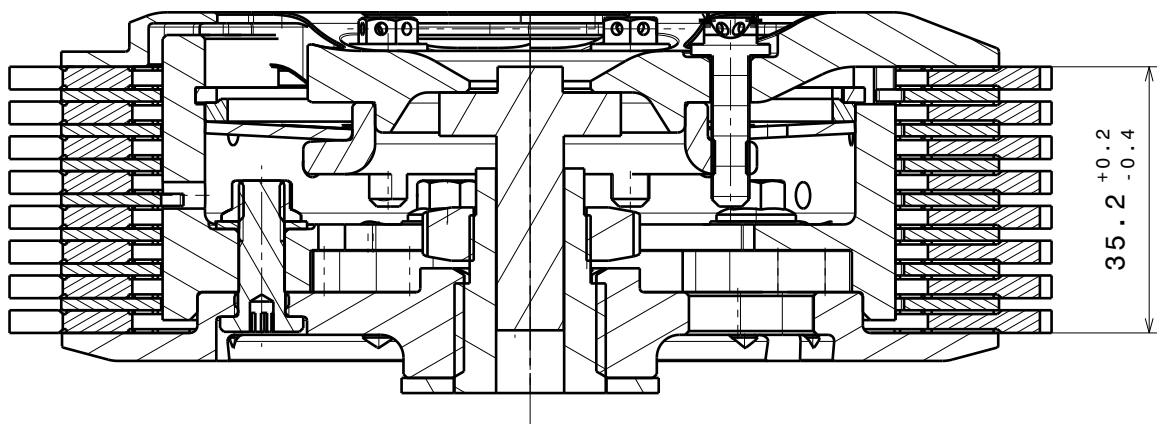
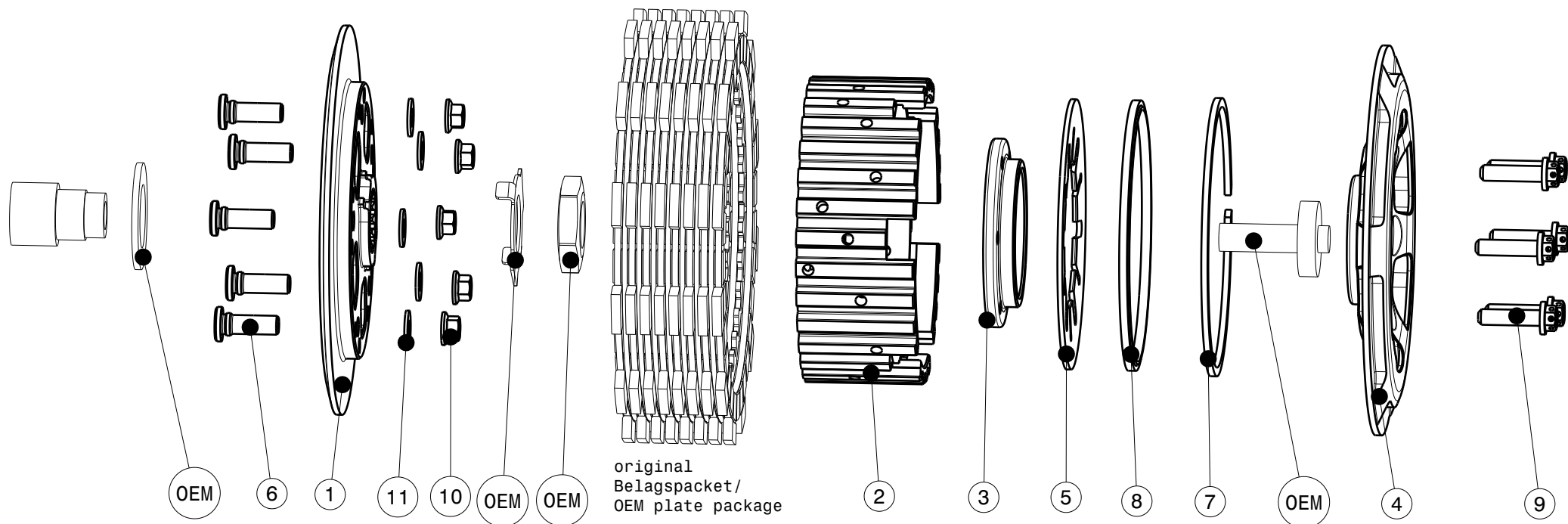


004-77055-0 SuterClutch MX-Line

Yamaha YZ125 00-23 / Fantic XX125 21-23 Factory



ITEM	PART NAME	PART NUMBER	QTY
1	Back Plate YZ125 Factory	004-77723	1
2	Inner Hub	004-22740	1
3	Clamp Hub 5mm	004-00545	1
4	Pressure Plate YZ125 Factory	004-77945	1
5	Disk Spring ø86 1000N	004-86100	1
6	Stud Backplate L18	004-12981	5
7	Circlip 86mm	004-17886	1
8	Locking Ring 86mm	004-00686	1
9	Hex Head Bolt M5x20	999-112205020	6
10	Flanged Nut self-locking M6	999-12030605	5
11	Washer M6	BN1976-6x12x1	5

Das angegebene Belagspaketmass ist zwingend einzuhalten!
The plate package thickness must be strictly adhered to!