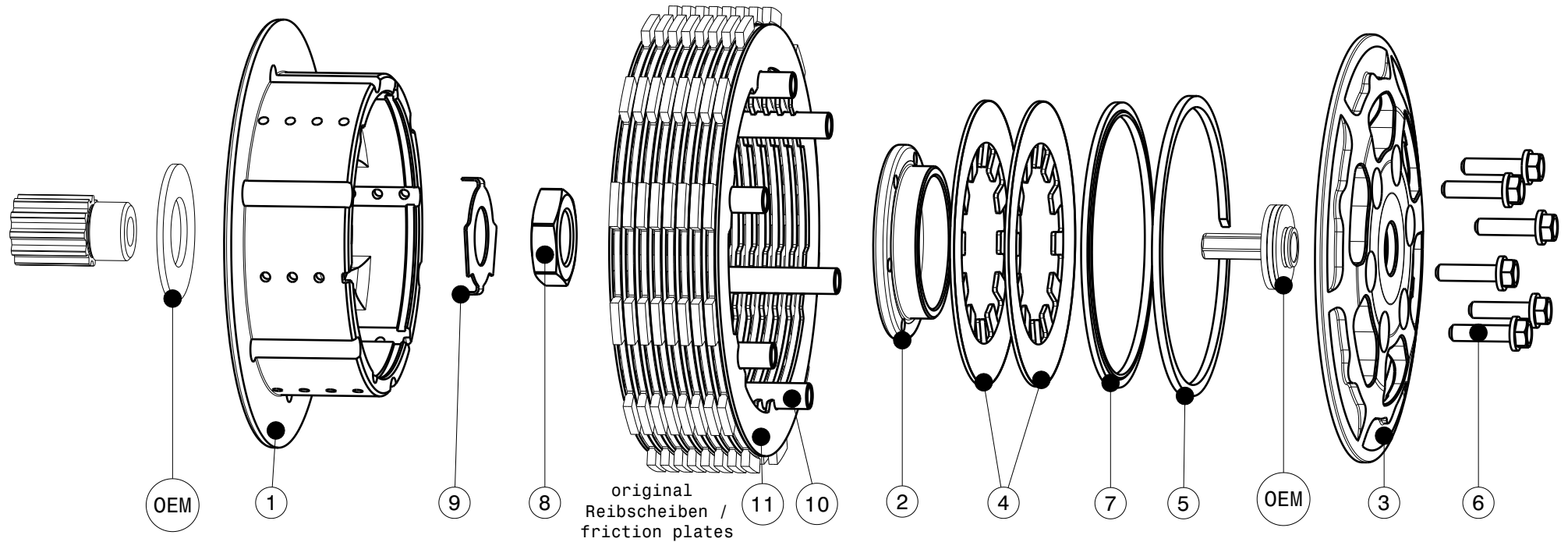
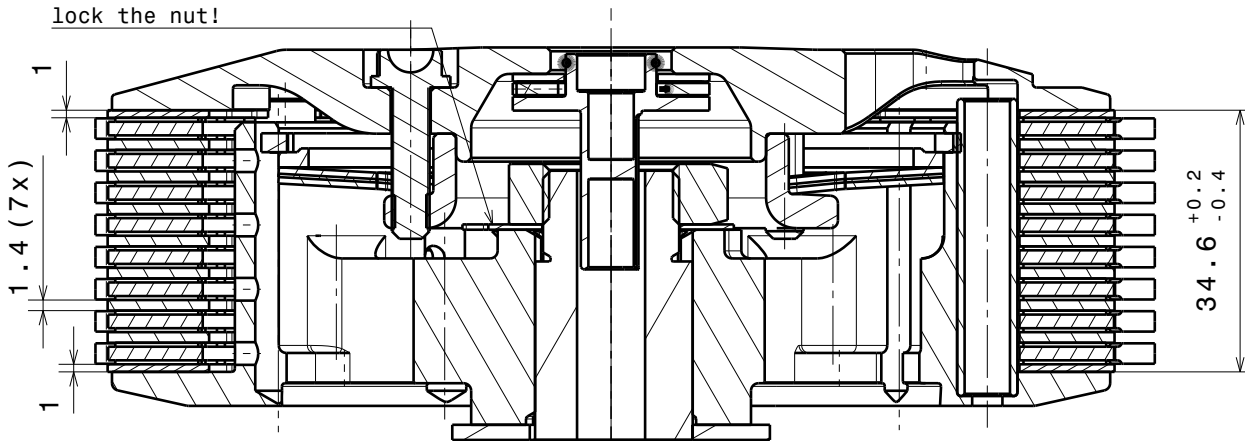


004-76055-2 SuterClutch MX-Line EVO Triumph TF250X



-Die Scheibe Nr.9 biegen um
die Mutter zu sichern!
-Bend the washer No.9 to
lock the nut!



| ITEM | PART NAME | PART NUMBER | QTY |
|------|----------------------------------|------------------|----------|
| 1 | Inner Hub Triumph EVO 250 | 004-76745 | 1 |
| 2 | Clamp Hub 8mm | 004-00508 | 1 |
| 3 | Pressure Plate Triumph 250 EVO | 004-76943 | 1 |
| 4 | Disk Spring Main ø88 700N | 004-88070 | 2 |
| 5 | Circlip 90mm | 004-17804 | 1 |
| 6 | Hex Head Bolt M5x20 | 999-110205020 | 6 |
| 7 | Locking Ring 88mm | 004-00688 | 1 |
| 8 | Nut M18x1.5 | 004-998181580 | 1 |
| 9 | Locking Washer 18x31x0.7 | 004-00673 | 1 |
| 10 | Hollow Dowel 39.3mm | 004-994408393 | 6 |
| 11 | Steeldisc Set EVO Triumph TF250X | 004-76800 | 1 |

Das angegebene Paketmass ist zwingend einzuhalten!
The plate package thickness must be strictly adhered to!