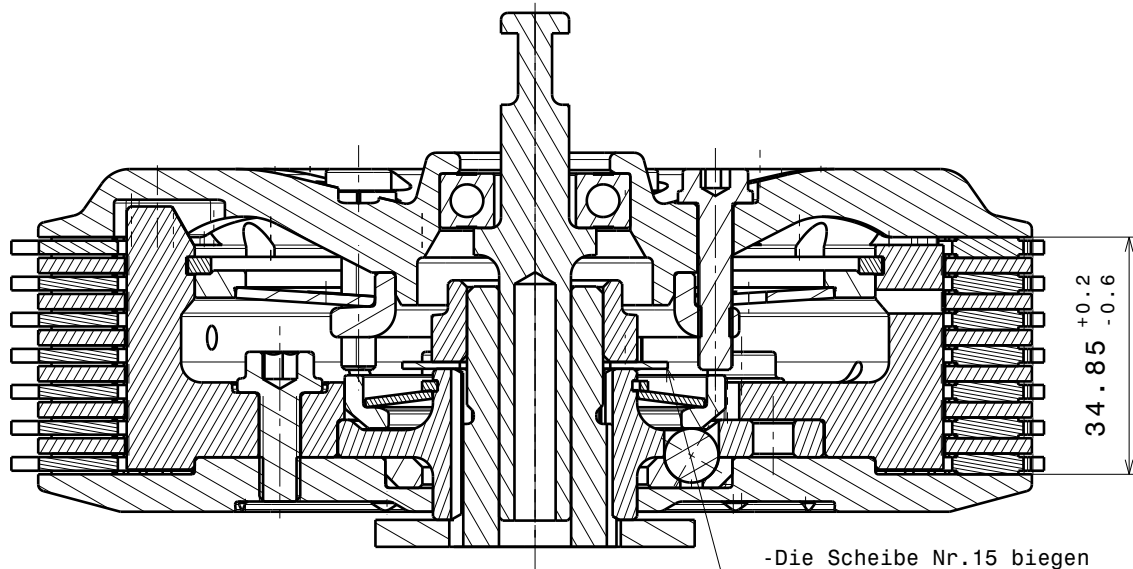
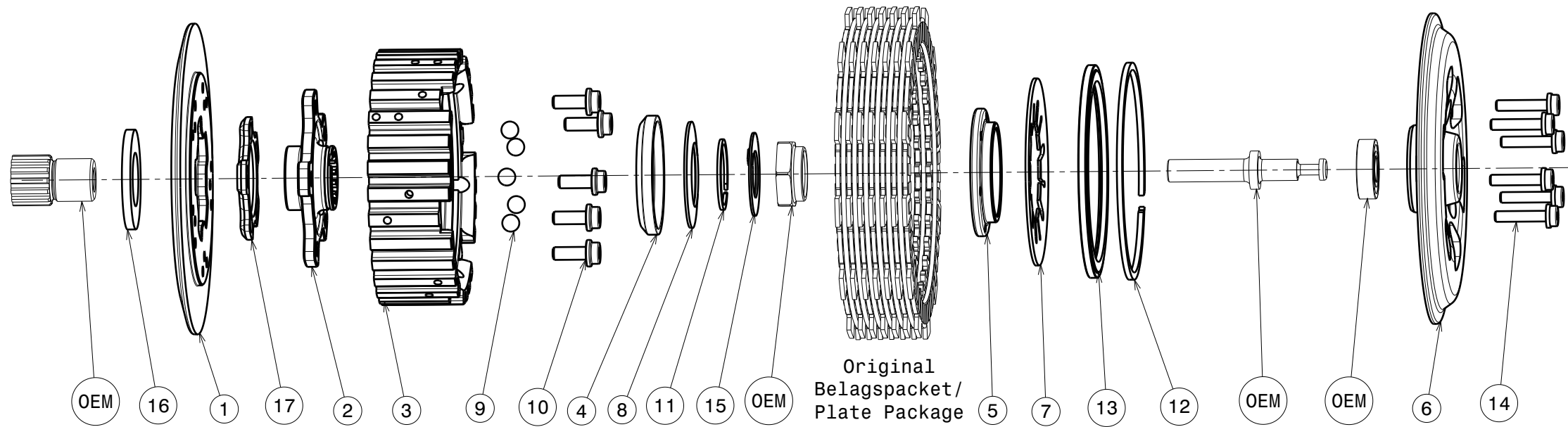


004-70001-2 SuterClutch Kawasaki ER-6n



-Die Scheibe Nr.15 biegen um die Mutter zu sichern!
 -Bend the washer No.15 to lock the nut!

Das angegebene Belagspaketmass ist zwingend einzuhalten!
The plate package thickness must be strictly adhered to!

Partlist: 1956			
ITEM	PART NAME	SRT NUMBER	QTY
1	Back Plate	004-70720	1
2	Hub Carrier	004-33700	1
3	Inner Hub	004-70740	1
4	Release Ring	004-15975	1
5	Clamp Hub 5mm	004-00505	1
6	Pressure Plate	004-70940	1
7	Disk Spring Main ø88 1600N	004-88160	1
8	Torque Limiter Spring 1300N	004-50130	1
	Torque Limiter Spring 1100N	004-50110	(1)
	Torque Limiter Spring 1500N	004-50150	(1)
9	Ball 8mm	004-17801	5
10	Bolt M6x16	004-17816	5
11	Circlip 30mm	004-17803	1
12	Circlip 100mm	004-17833	1
13	Locking Ring 100mm	004-00600	1
14	Distance Bolt M5 L=24.5mm	004-05245	6
15	Locking Washer 20/34/1	004-00670	1
16	Thrust Washer	004-70950	1
17	Ramp Insert 35°	004-00744	1