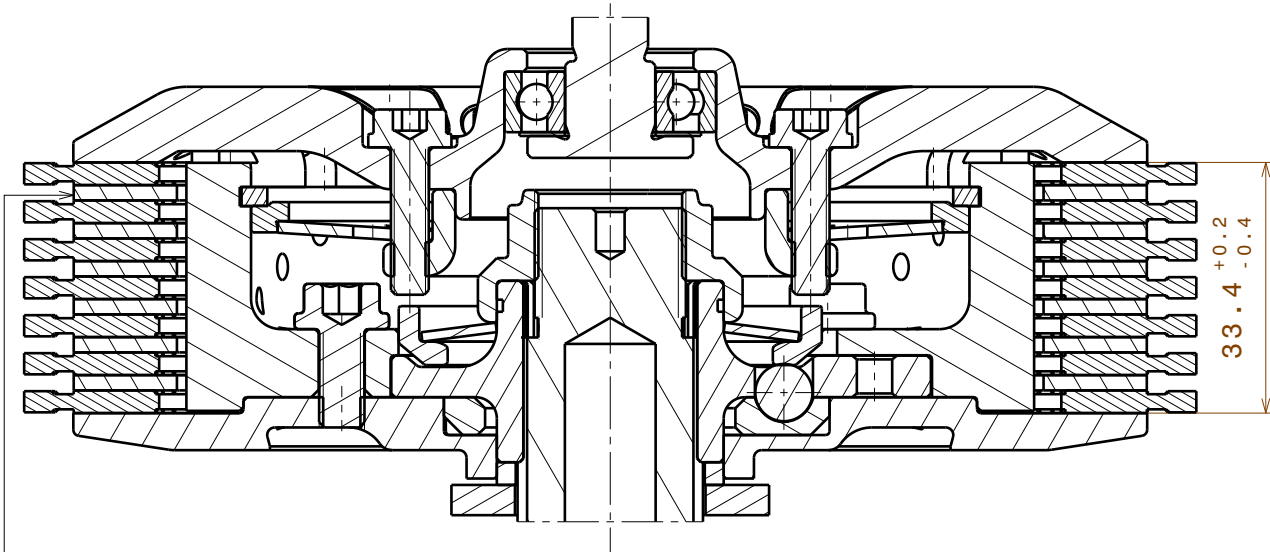
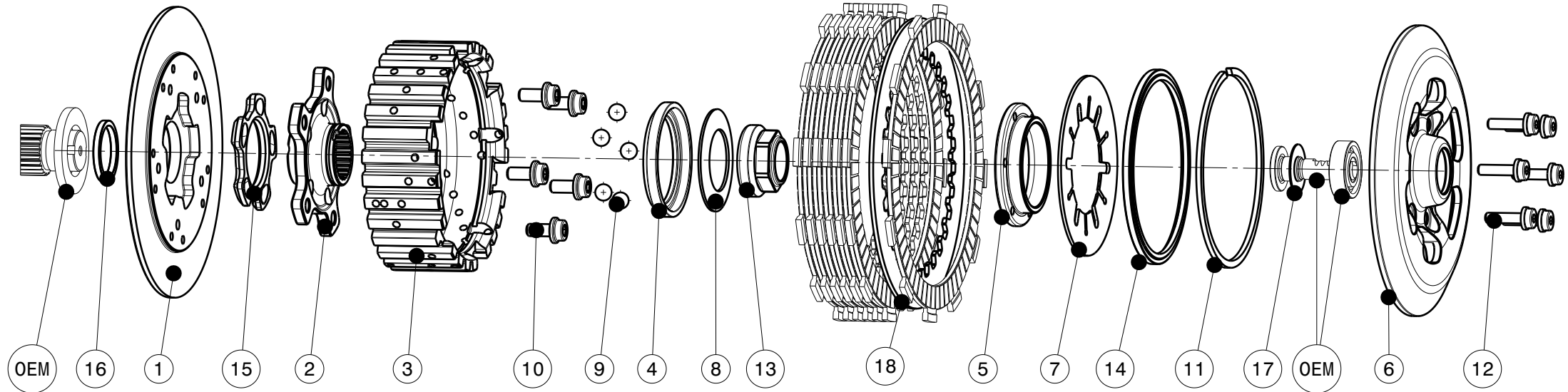


004-65002-0 SuterClutch Yamaha R7 2022-2023



Diese Stahlscheibe muss durch die mitgelieferte (Pos.18) ersetzt werden
 This steel disk has to be replaced with the delivered one (Pos.18)

Das angegebene Belagpaketmass ist zwingend einzuhalten!
The plate package thickness must be strictly adhered to!

ITEM	PART NAME	SRT NUMBER	QTY
1	BACK PLATE	004-65720	1
2	HUB CARRIER	004-15704	1
3	INNER HUB	004-33741	1
4	RELEASE RING	004-15975	1
5	KLAMP HUB 7mm	004-00507	1
6	PRESSURE PLATE	004-65940	1
7	MAIN SPRING 47x88x1310N	004-88131	1
8	TORQUE LIMITER SPRING 1100N	004-50110	1
8.1	TORQUE LIMITER SPRING 950N	004-50095	1
8.2	TORQUE LIMITER SPRING 1300N	004-50130	1
9	BALL 8mm	004-17801	5
10	BOLT M6x13	004-17835	5
11	CIRCLIP 95mm	004-17813	1
12	DISTANCE BOLT M5x19.5	004-05195	6
13	MAIN NUT M20x1 L=5.5	004-999201055	1
14	LOCKING RING 95mm	004-00695	1
15	RAMP INSERT 27.5°	004-00721	1
16	THRUST WASHER (3.0)	004-65950	1
17	SHIM 12x24x0.5	BN748-12x24x0.5	1
18	STEEL DISC 2.0MM	004-15923	1