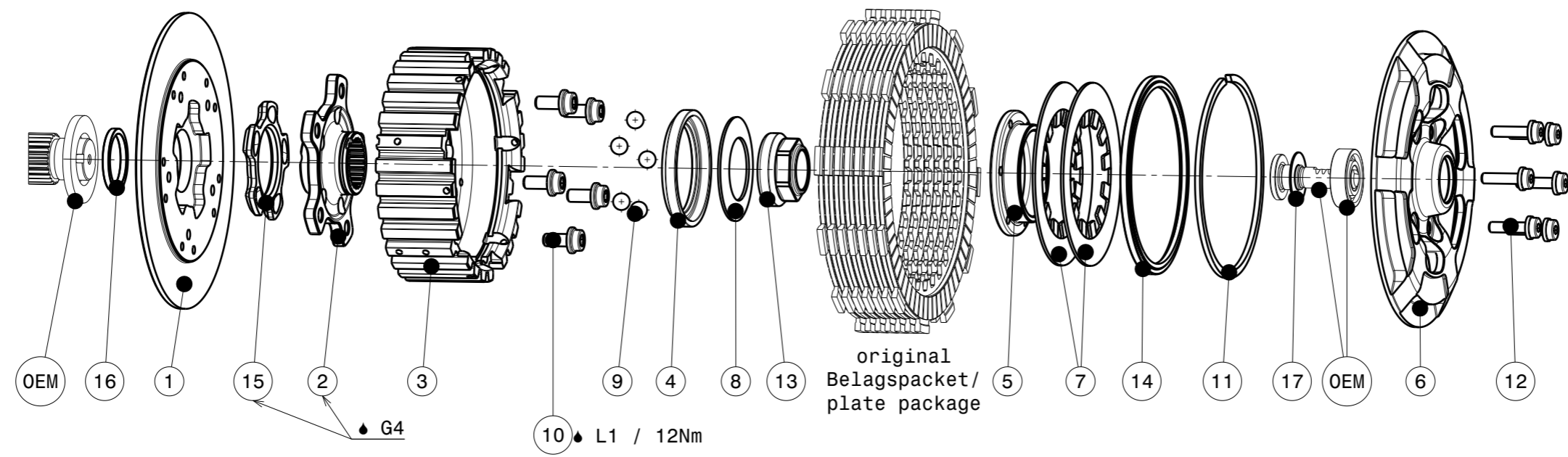
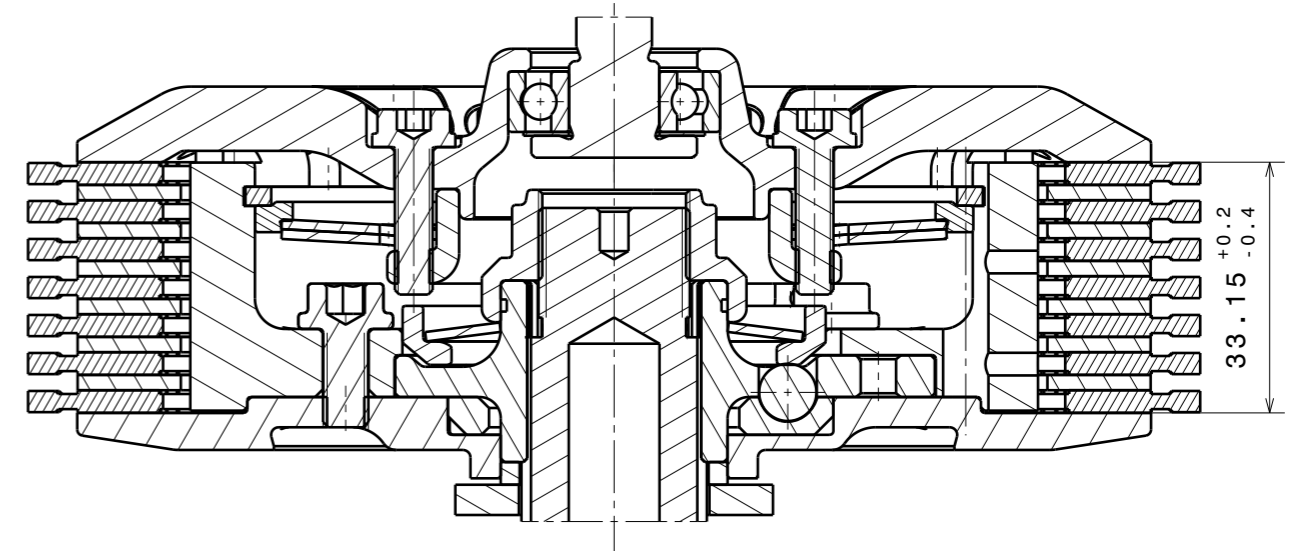


Copyright © SUTER Industries AG / Mettlenstrasse 3 / CH-8488 Turbenthal. Für dieses Dokument behalten wir uns alle Rechte vor. / We reserve all rights in connection with this document.  
CAD System: CATIA

ISS	GRID	DCR	DESCRIPTION OF CHANGE	DATE	SIG
5			change to double spring	23-NOV-23	TK
4			pos. 2 was 004-15702	02-JUN-20	TK



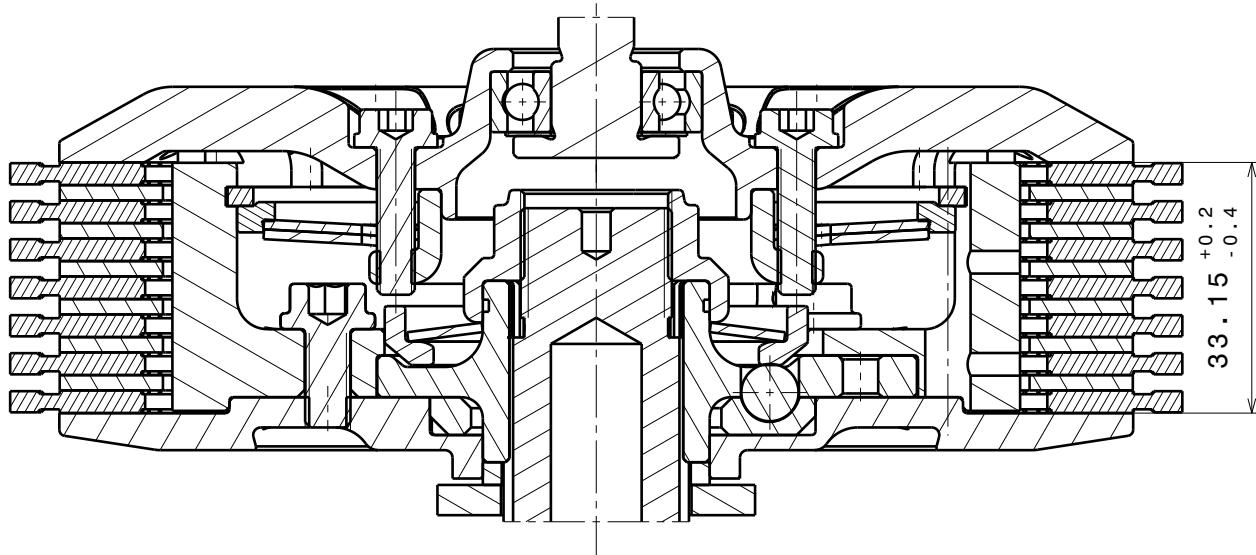
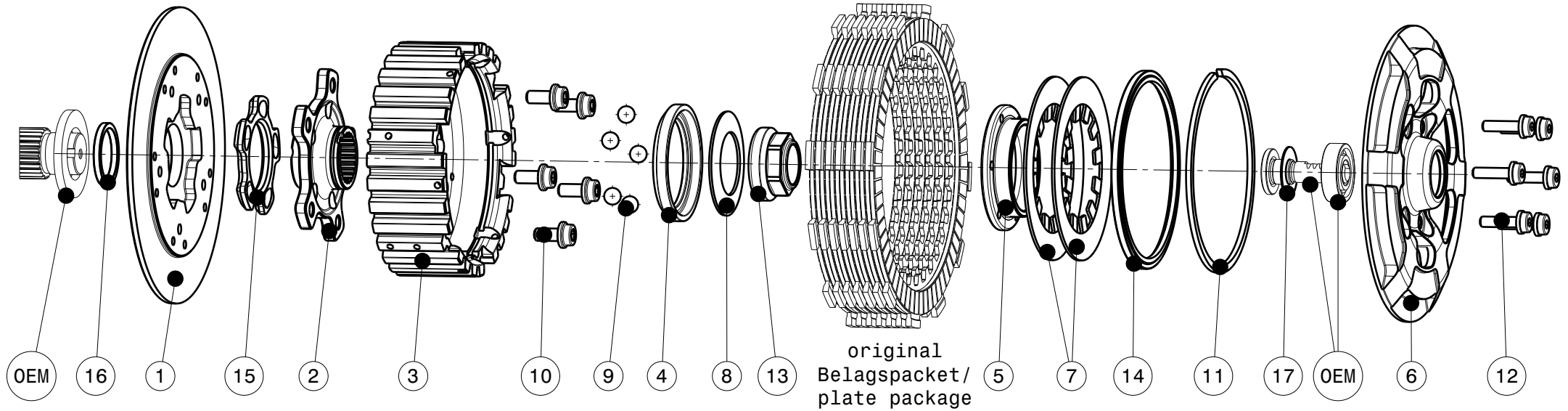
ITEM	PART NAME	SRT NUMBER	QTY
1	Back Plate	004-65720	1
2	Hub Carrier	004-15704	1
3	Inner Hub	004-33741	1
4	Release Ring	004-15975	1
5	Clamp Hub 8mm	004-00508	1
6	Pressure plate	004-65940	1
7	<b>Disk Spring Main ø88 700N</b>	<b>004-88070</b>	<b>2</b>
8	<b>Torque Limiter Spring 1700N</b>	<b>004-50170</b>	<b>1</b>
9	Ball 8mm	004-17801	5
10	Bolt M6x13	004-17835	5
11	Circlip 95mm	004-17813	1
12	Distance Bolt M5 L=19.5mm	004-05195	6
13	Main Nut M20x1 L=5.5	004-999201055	1
14	Locking Ring 95mm	004-00695	1
15	<b>Ramp Insert 27.5°</b>	<b>004-00721</b>	<b>1</b>
16	Shim 12x24x0.5	BN748-12x24x0.5	1
<b>SETUP MATERIAL</b>			
8.1	Torque Limiter Spring 1500N	004-50150	1
8.2	Torque Limiter Spring 1900N	004-50190	1
<b>INSTALLATION MATERIAL</b>			
16	Thrust Washer (3.0)	004-65950	1
<b>ADDITIONAL MATERIAL</b>			
	SuterClutch packing compl. 2017	004-52042	1
	Sticker SuterClutch 7x1.5cm	004-52050	2
	Sticker SuterClutch 15x3.3cm	004-52051	2
	Installation Manual SuterClutch	004-52060	1
	Set Gap Measuring	004-52100	1
	Drawing "Kunde"	-	1



Fehlende Masse und Angaben sind dem 3D-CAD-Datensatz zu entnehmen  
For missing dimensions and details see 3D-CAD data set

Werkstoff (DIN) / Material (DIN) <b>SEE PARTLIST</b>	Oberfläche/Surface DIN ISO 1302	Kantenbruch / break edges ISO 13715	Toleranzangabe / Tolerance DIN ISO 2768 - mK DIN EN ISO 13920 - BF	Anzahl Prüfmerkmale / Number inspection characteristics 0
Zertifikat / Attest R <input type="checkbox"/> O <input type="checkbox"/> K <input type="checkbox"/> H <input type="checkbox"/>	Masstab/Scale 1:1	Gewicht/Weight 2782g	Format A3	Blatt/Sheet 1/2
Suter Industries			SuterClutch Yamaha MT-07 2014-2023	
SuterClutch Yamaha MT-07 2014-2023			Artikel Nr. / Part No. <b>004-65001</b>	
Datum/Date 16.12.2022			Name g.monterastelli	
Geprüft/checked 23.11.2023			f.kunz	
Freigegeben/approved 23.11.2023			t.kuhn	
Rev. <b>5</b>				

# 004-65001-5 SuterClutch Yamaha MT-07 / XSR700 2015-2023



ITEM	PART NAME	SRT NUMBER	QTY
1	BACK PLATE	004-65720	1
2	HUB CARRIER	004-15704	1
3	INNER HUB	004-33741	1
4	RELEASE RING	004-15975	1
5	KLAMP HUB 8mm	004-00508	1
6	PRESSURE PLATE	004-65940	1
7	<b>DISK SPRING MAIN ø88 700N</b>	<b>004-88070</b>	<b>2</b>
8	<b>TORQUE LIMITER SPRING 1700N</b>	<b>004-50170</b>	<b>1</b>
8.1	TORQUE LIMITER SPRING 1900N	004-50190	1
8.2	TORQUE LIMITER SPRING 1500N	004-50150	1
9	BALL 8mm	004-17801	5
10	BOLT M6x13	004-17835	5
11	CIRCLIP 95mm	004-17813	1
12	DISTANCE BOLT M5x19.5	004-05195	6
13	MAIN NUT M20x1 L=5.5	004-999201055	1
14	LOCKING RING 95mm	004-00695	1
15	<b>RAMP INSERT 27.5°</b>	<b>004-00721</b>	<b>1</b>
16	THRUST WASHER (3.0)	004-65950	1
17	SHIM 12x24x0.5	BN748-12x24x0.5	1

**Das angegebene Belagspaketmass ist zwingend einzuhalten!**  
**The plate package thickness must be strictly adhered to!**