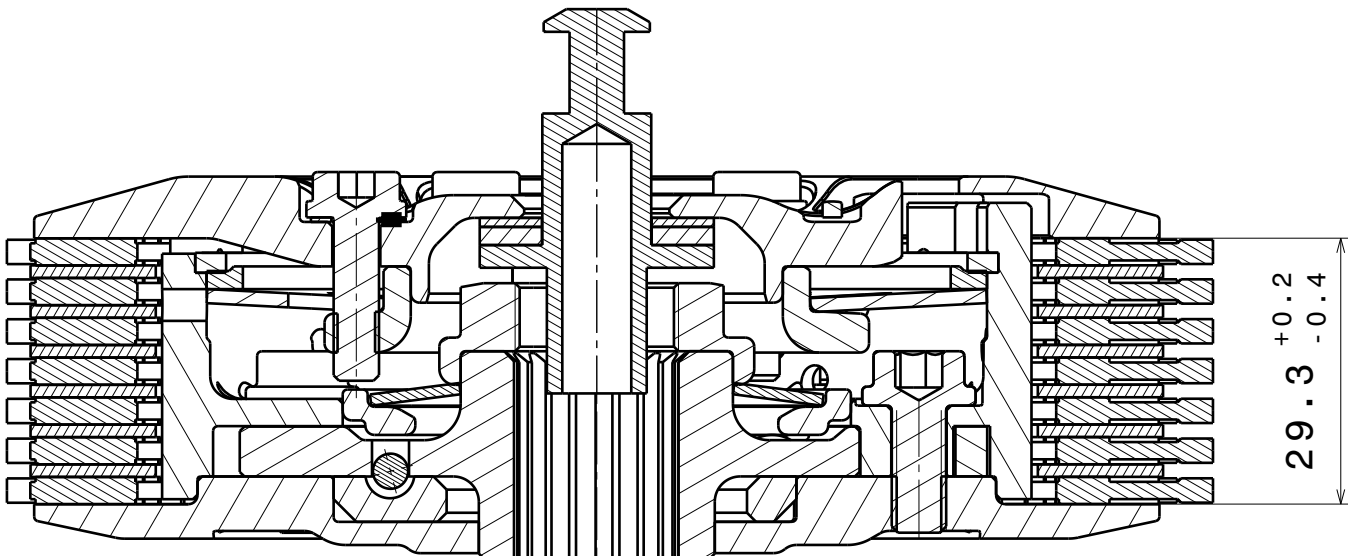
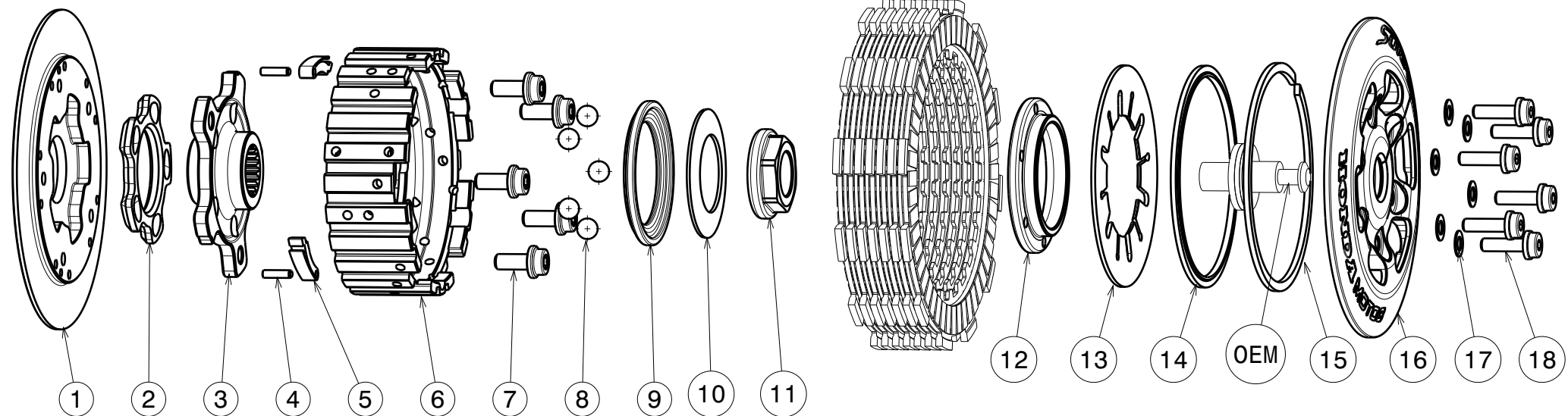


004-56021-5 SuterClutch Honda NSF 250R Moto3 Racks 12-14



ITEM	PART NAME	SRT NUMBER	QTY
1	BACK PLATE RACKS	004-29721	1
2	RAMP INSERT 32.5°	004-00723	1
3	HUB CARRIER RACKS	004-29701	1
4	PIN 3x12	BN858-3x12	2
5	RACK ELEMENT	004-00750	2
6	INNER HUB RACKS	004-56740	1
7	SCREW M6x14	004-17814	5
8	BALL 8.0mm	004-17801	5
9	RELEASE RING	004-00976	1
10	TORQUE LIMITER SPRING 1100N	004-50110	1
11	MAIN NUT M18x1 L=3.9mm	004-999181039	1
12	CLAMP HUB 5mm	004-00505	1
13	DISK SPRING MAIN 47x86x1100N	004-86110	1
14	LOCKING RING 86	004-00586	1
15	CIRCLIP 86mm	004-17886	1
16	PRESSURE PLATE	004-56940	1
17	DISTANCE WASHER 0.5mm	004-00005	6
18	DISTANCE SCREW M5x18.0	004-05180	6

Das angegebene Belagpaketmass ist zwingend einzuhalten!
The plate package thickness must be strictly adhered to!