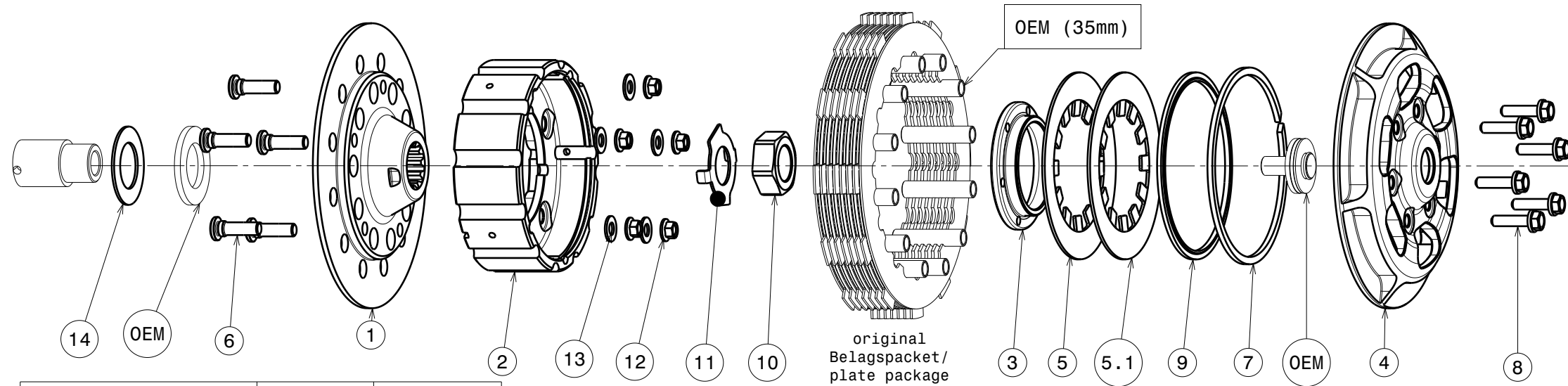


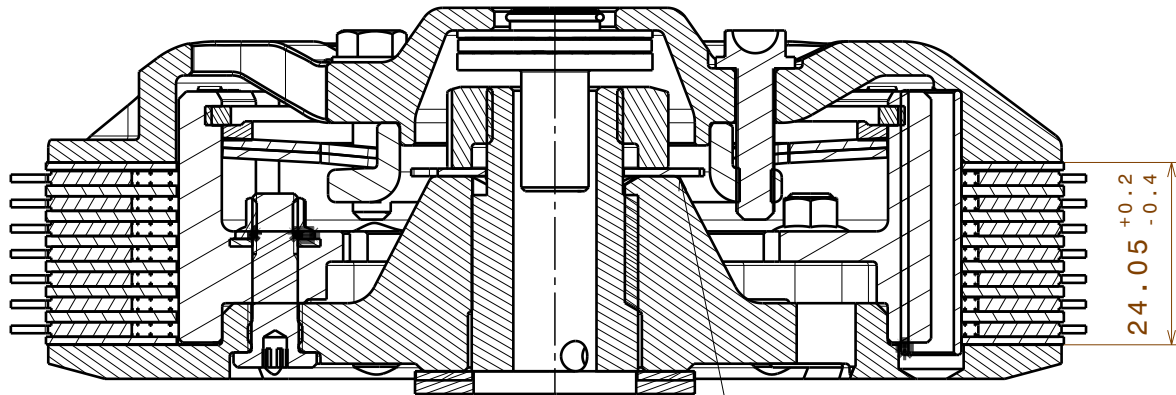
# 004-55052-5 SuterClutch MX-Line 250/350



Für Modell For Model			Thrust Washer
GasGas	KTM/Husqvarna	KTM Factory	
2020 - 2023	2016 - 2022	2016 - 2021	OEM Washer
-	2023	2022 - 2023	Pos.14

In jedem Einbaufall: nur **eine** Scheibe verwenden!  
In any case: use only **one** of the 2 washers!

ITEM	PART NAME	SRT NUMBER	QTY
1	Back Plate PD	004-55725	1
2	Inner Hub	004-55743	1
3	Clamp Hub 6mm	004-00506	1
4	Pressure plate	004-55943	1
5	Disk Spring Main ø88 600N	004-88060	1
5.1	Disk Spring Main ø88 700N	004-88070	1
6	Stud Bolt M6	004-12980	5
7	Circlip 90mm	004-17804	1
8	Bolt M5x20	999-110205020	6
9	Locking Ring 88mm	004-00688	1
10	Nut M18x1.5	004-55955	1
11	Locking Washer 18/31/1	004-00674	1
12	Nut M6	999-12030605	5
13	Washer M6	BN1976-6x12x1.0	5
14	Thrust Washer	004-55901	1



-Die Scheibe Nr.11 biegen um die Mutter zu sichern!  
-Bend the washer No.11 to lock the nut!

**Das angegebene Paketmass ist zwingend einzuhalten!**  
**The plate package thickness must be strictly adhered to!**

GasGas		Husqvarna		KTM	
MC250F	MC350F	250 FC	350 FC/FX	250 SX-F	350 SX-F
2016-2023		2016 - 2023			