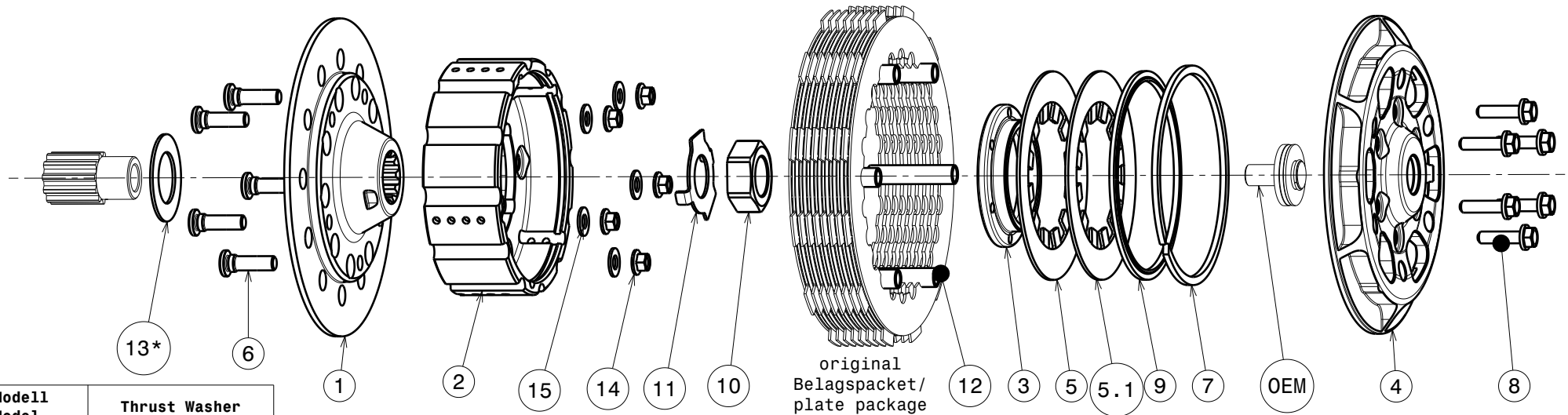


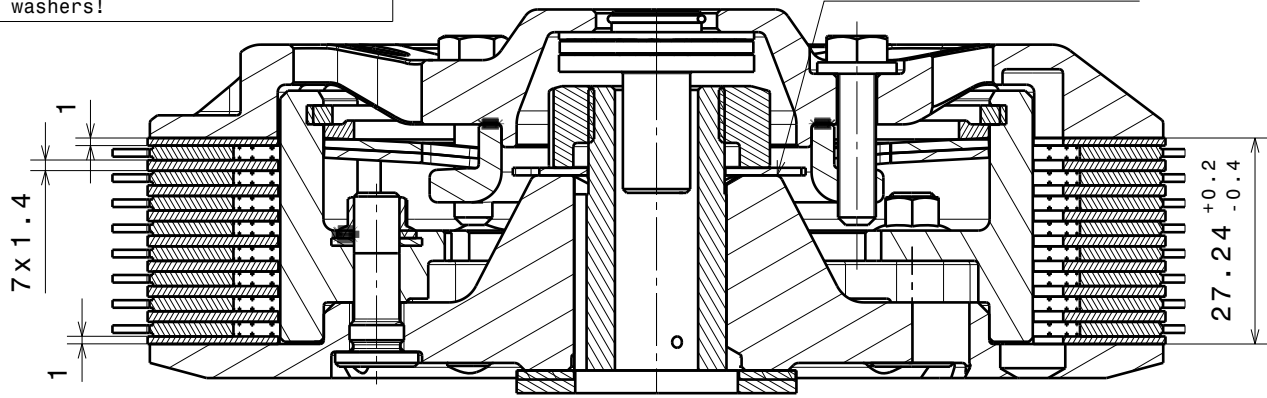
004-55051-7 SuterClutch MX-Line



Für Modell For Model	Thrust Washer
250cc 13-14	Pos. 13*
250cc 15-	OEM Washer
350cc	OEM Washer
450cc	Pos. 13*
500/501/510cc	Pos. 13*

In jedem Einbaufall: nur **eine** Scheibe verwenden!
In any case: use only **one** of the 2 washers!

-Die Scheibe Nr.11 biegen um die Mutter zu sichern!
-Bend the washer No.11 to lock the nut!



Das angegebene Paketmass ist zwingend einzuhalten!
The plate package thickness must be strictly adhered to!

ITEM	PART NAME	SRT NUMBER	QTY
1	Back Plate PD	004-55729	1
2	Inner Hub	004-55743	1
3	Clamp Hub 6mm	004-00506	1
4	Pressure plate	004-55947	1
5	Disk Spring Main ø88 700N	004-88070	1
5.1	Disk Spring Main ø88 800N	004-88080	1
6	Stud Bolt M6	004-12980	5
7	Circlip 90mm	004-17804	1
8	Bolt M5x20	999-110205020	6
9	Locking Ring 88mm	004-00688	1
10	Nut M18x1.5	004-55955	1
11	Locking Washer 18/31/1	004-00674	1
12	Sleeve 38mm	004-55990	6
13	Thrust Washer	004-55901	1
14	Nut M6	999-12030605	5
15	Washer M6	BN1976-6x12x1.0	5

GasGas	Husaberg										Husqvarna										KTM									
MC450F	450 FE FC	501 FE FC	250 FE	250 FC	250 TE/TC	300 TE/TC	350 FE	350 FC	450 FS	450 FE FC FX	501 FE FC FX	501 FE	250 SX	250 SX-F	250 EXC-F	250 SX/EXC /XC/XC -W	300 SX	300 EXC/XC /XC-W	350 SX-F	350 EXC-F	450 SX-F EXC	450 SMR	500 EXC							
2020 - 2023	2013 - 2015	2013 - 2015	2014 - 2023	2014 - 2015	2017 - 2023	2017 - 2023	2014 - 2019	2014 - 2015	2015 - 2023	2014 - 2023	2014 - 2023	2014 - 2023	2017 - 2023	2013 - 2015	2013 - 2023	2017 - 2023	2023	2017 - 2023	2010 - 2015	2012 - 2023	2012 - 2023	2013 - 2014	2021 - 2023	2012 - 2023						