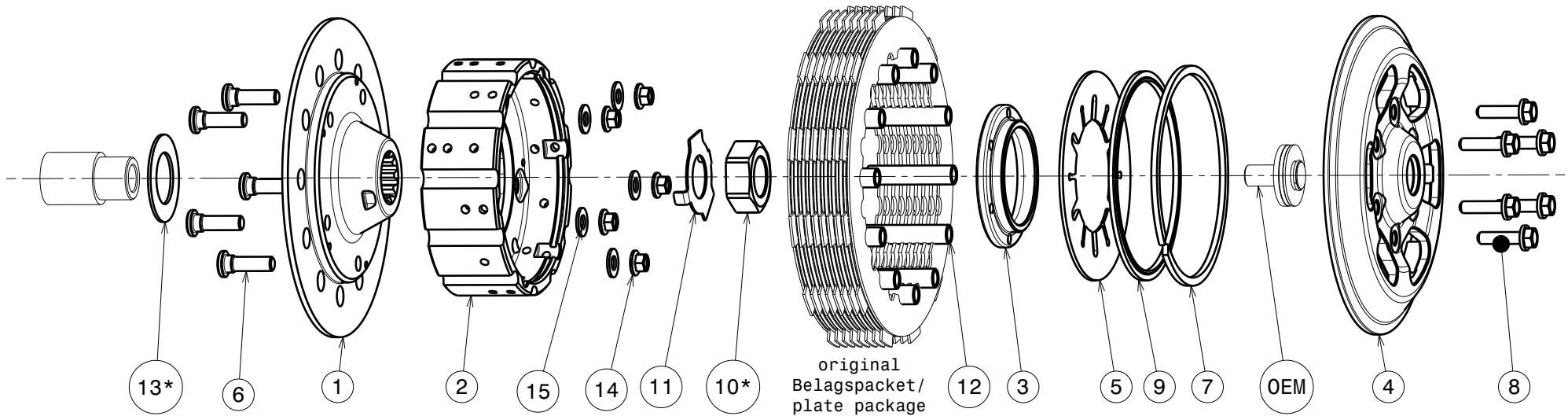


004-55051-1 SuterClutch MX-Line

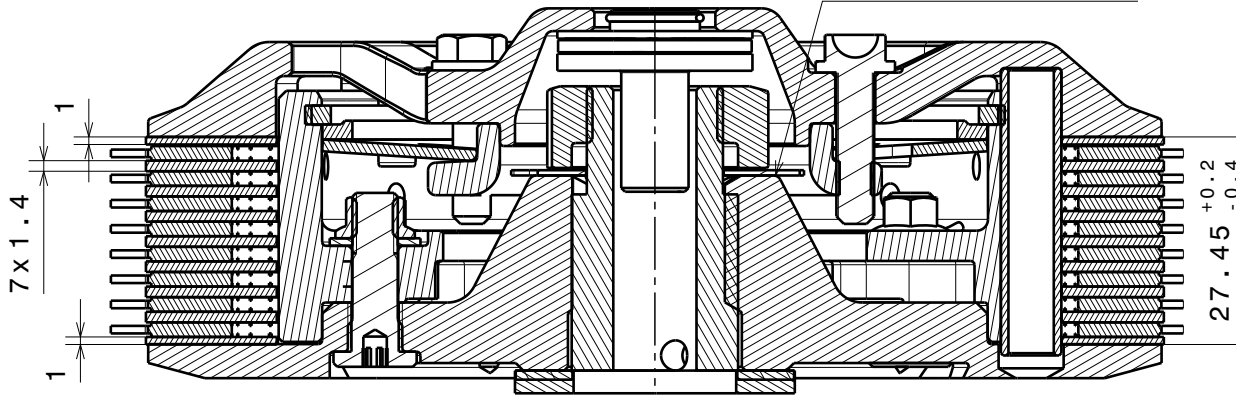


-Die Scheibe Nr.11 biegen um die Mutter zu sichern!
 -Bend the washer No.11 to lock the nut!

Für Modell For Model	Main Nut
250cc	Pos. 10*
350cc	Pos. 10*
450cc	OEM Nut
500/501/510cc	OEM Nut

Für Modell For Model	Thrust Washer
250cc 13-14	Pos. 13*
250cc 15-	OEM Washer
350cc	OEM Washer
450cc	Pos. 13*
500/501/510cc	Pos. 13*

In jedem Einbaufall: nur **eine** Scheibe verwenden!
 In any case: use only **one** of the 2 washers!



Das angegebene Paketmass ist zwingend einzuhalten!
 The plate package thickness must be strictly adhered to!

Partlist: 1820			
ITEM	PART NAME	SRT NUMBER	QTY
1	Back Plate PD	004-55725	1
2	Inner Hub	004-55740	1
3	Clamp Hub 5mm	004-00505	1
4	Pressure plate	004-55940	1
5	Disk Spring Main ø88 1235N	004-88123	1
6	Stud Bolt M6	004-12980	5
7	Circlip 90mm	004-17804	1
8	Bolt M5x20	999-110205020	6
9	Locking Ring 88mm	004-00688	1
10	Nut M18x1.5	004-55955	1
11	Locking Washer 18/31/0.7	004-00673	1
12	Sleeve 38mm	004-55990	12
13	Thrust Washer	004-55901	1
14	Nut M6	999-12030605	5
15	Washer M6	BN1976-6x12x1.0	5

Husaberg		Husqvarna									KTM									
450 FE FC	501 FE FC	250 FE	250 FC	250 TE/TC	300 TE/TC	350 FE	350 FC	450 FS	450 FE FC	501 FE	250 SX-F	250 EXC-F	250 SX/EXC/XC/XC-W	300 EXC/XC/XC-W	350 SX-F	350 EXC-F	450 SX-F	450 SMR	500 EXC	
2013-2015	2013-2015	2014-2019	2014-2015	2017-2020	2017-2020	2014-2019	2014-2015	2015-2020	2014-2020	2014-2019	2013-2015	2013-2020	2017-2020	2017-2020	2010-2015	2012-2020	2012-2020	2013-2014	2012-2020	