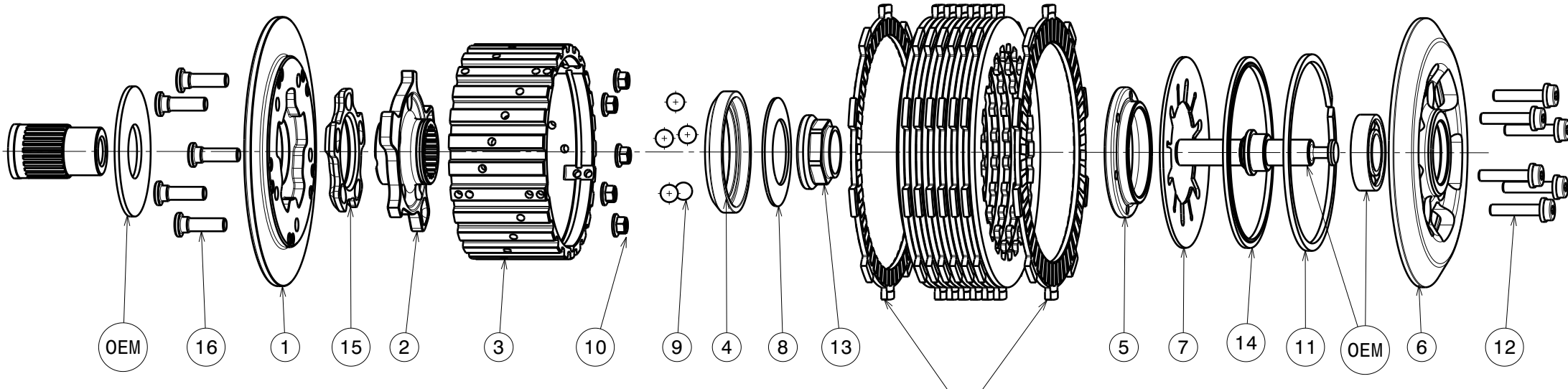


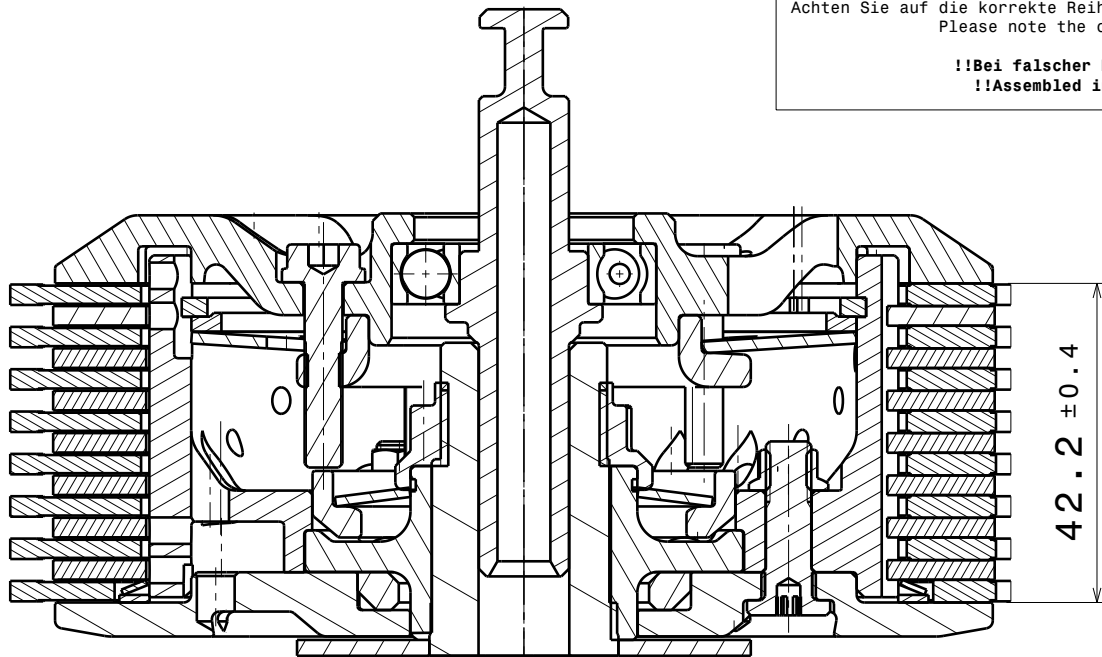
# 004-48002-2 SuterClutch Triumph 675

675 Daytona 06-12  
 Streettriple 06-17  
 Streettriple R 06-17



Achten Sie auf die korrekte Reihenfolge der ersten und letzten Reibscheibe, wie sie im originalen Handbuch beschrieben wird.  
 Please note the correct order of the first and last friction disk as shown in the OEM manual.

**!!Bei falscher Reihenfolge wird erhöhter Verschleiss an Druck- und Grundplatte auftreten!!**  
**!!Assembled in wrong order will result in higher wear on the pressure- and backplate!!**



**Das angegebene Belagpaketmass ist zwingend einzuhalten!**  
**The plate package thickness must be strictly adhered to!**

| Part List (1447) |                                     |                  |          |
|------------------|-------------------------------------|------------------|----------|
| ITEM             | PART NAME                           | SRT NUMBER       | QTY      |
| 1                | BACK PLATE FOR INSERT               | 004-12725        | 1        |
| 2                | HUB CARRIER                         | 004-12705        | 1        |
| 3                | INNER HUB                           | 004-12745        | 1        |
| 4                | RELEASE RING                        | 004-12975        | 1        |
| 5                | CLAMP HUB 5.0mm                     | 004-00505        | 1        |
| 6                | PRESSURE PLATE                      | 004-48943        | 1        |
| 7                | <b>DISK SPRING MAIN 47x88x1310N</b> | <b>004-88131</b> | <b>1</b> |
| 8                | <b>TORQUE LIMITER SPRING 1100N</b>  | <b>004-50110</b> | <b>1</b> |
| 8                | TORQUE LIMITER SPRING 950N          | 004-50095        | 1        |
| 8                | TORQUE LIMITER SPRING 1300N         | 004-50130        | 1        |
| 9                | BALL 8.0MM                          | 004-17801        | 5        |
| 10               | NUT M6                              | 999-12030605     | 5        |
| 11               | CIRCLIP ø90mm                       | 004-17804        | 1        |
| 12               | DISTANCE BOLT M5x24.5               | 004-05245        | 6        |
| 13               | RACING NUT M22x1                    | 004-999221031    | 1        |
| 14               | LOCKING RING ø88mm                  | 004-00688        | 1        |
| 15               | <b>RAMP INSERT 32.5°</b>            | <b>004-00723</b> | <b>1</b> |
| 16               | STUDS M6                            | 004-12980        | 5        |