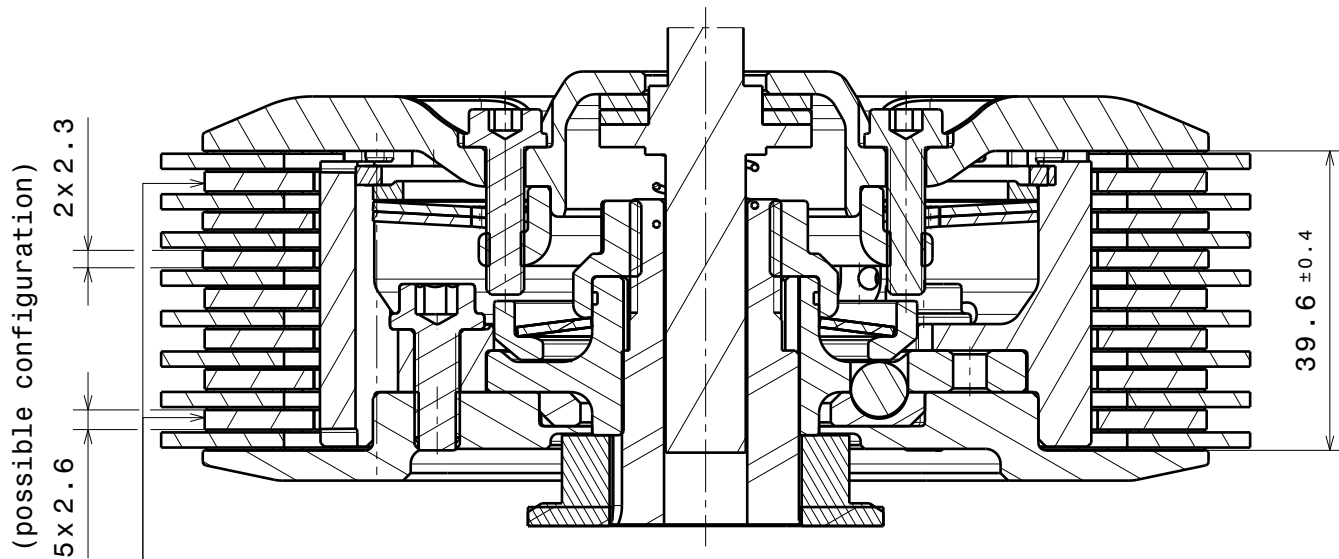
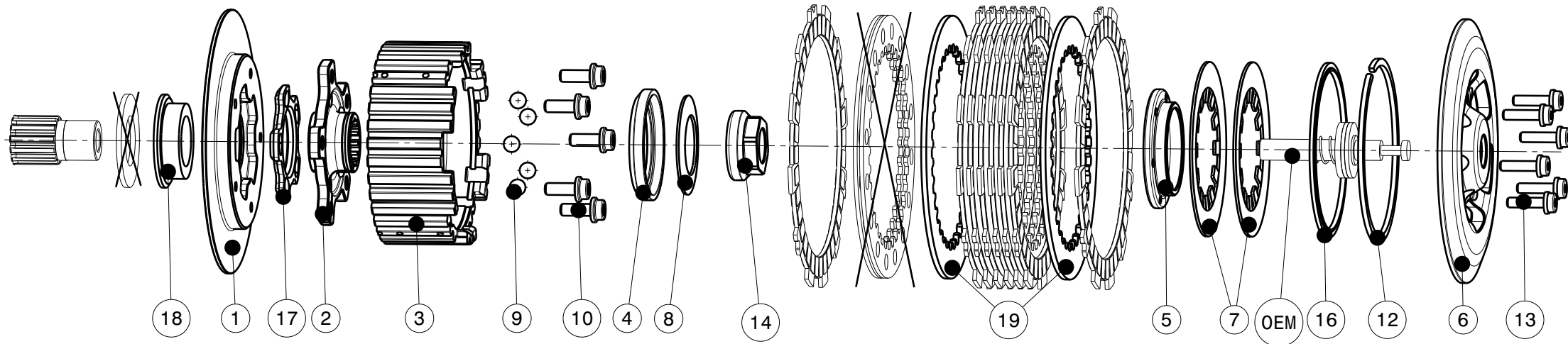


004-46003-3 SuterClutch Kawasaki ZX6R [ZX636]



Diese Stahlscheiben müssen durch die mitgelieferten (Pos.19) ersetzt werden
 These steel disks have to be replaced with the delivered ones (Pos.19)

Das angegebene Belagpaketmass ist zwingend einzuhalten!
The plate package thickness must be strictly adhered to!

ITEM	PART NAME	SRT NUMBER	QTY
1	Back Plate	004-46722	1
2	Hub Carrier	004-46700	1
3	Inner Hub	004-46741	1
4	Release Ring	004-15975	1
5	Clamp Hub 6mm	004-00506	1
6	Pressure Plate	004-46940	1
7	Disk Spring Main ø88 700N	004-88070	2
8	Torque Limiter Spring 850N	004-50085	1
	Torque Limiter Spring 950N	004-50095	1
	Torque Limiter Spring 750N	004-50075	1
9	Ball 8mm	004-17801	5
10	Bolt M6x16	004-17816	5
12	Circlip 90mm	004-17804	1
13	Distance Bolt M5 L=19.5mm	004-05195	6
14	Main Nut M20x1.5 L=5.5mm	004-999201555	1
16	Locking Ring 88mm	004-00688	1
17	Ramp Insert 32.5° H=4.5mm	004-00743	1
18	Thrust Washer 25.4x47x12	004-46900	1
19	Steel Disc 2.6mm	004-15921	4