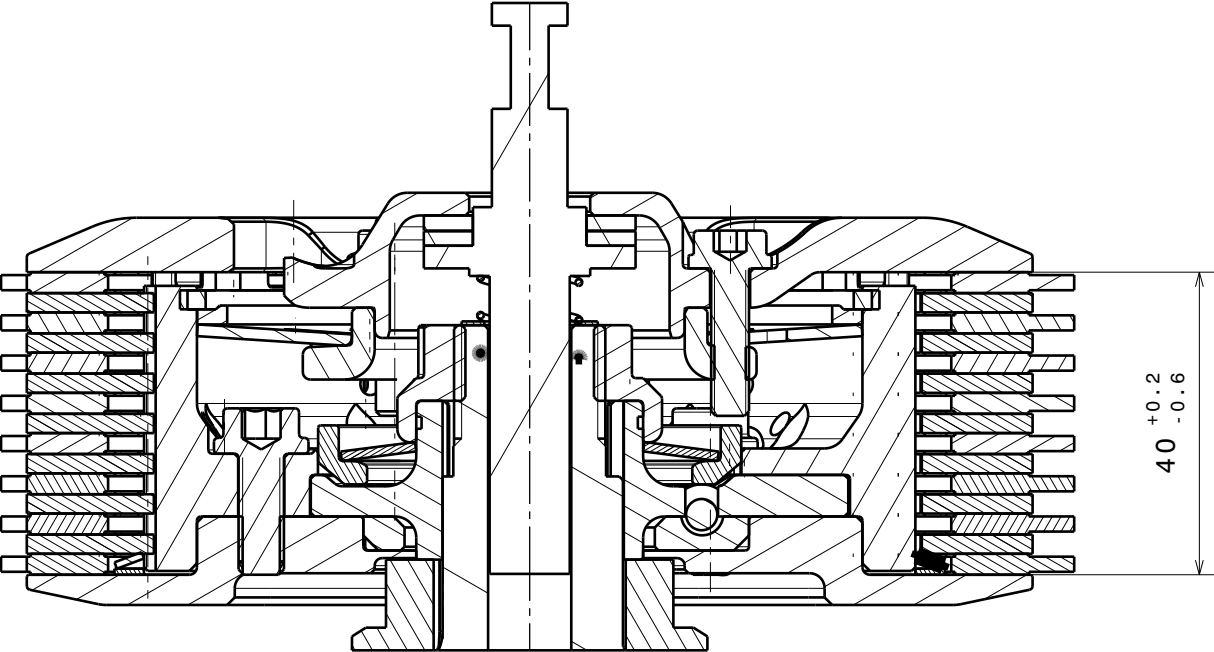
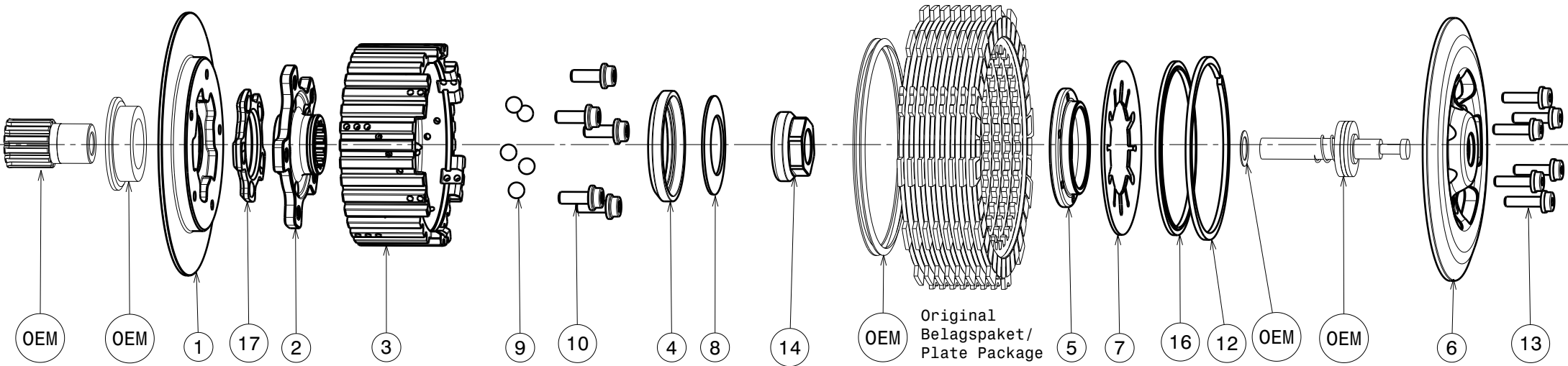


004-46002-3 SuterClutch Kawasaki ZX6R Insert 05-17



Das angegebene Belagspaketmass ist zwingend einzuhalten!
The plate package thickness must be strictly adhered to!

ITEM	PART NAME	SRT NUMBER	QTY
1	Back Plate	004-46722	1
2	Hub Carrier	004-46700	1
3	Inner Hub	004-46741	1
4	Release Ring	004-15975	1
5	Clamp Hub 5mm	004-00505	1
6	Pressure Plate	004-46940	1
7	Disk Spring Main ø88 1400N	004-88140	1
8	Torque Limiter Spring 850N	004-50085	1
	Torque Limiter Spring 950N	004-50095	1
	Torque Limiter Spring 750N	004-50075	1
9	Ball 8mm	004-17801	5
10	Bolt M6x16	004-17816	5
12	Circlip 90mm	004-17804	1
13	Distance Bolt M5 L=19.5mm	004-05195	6
14	Main Nut M20x1.5 L=5.5mm	004-999201555	1
16	Locking Ring 88mm	004-00688	1
17	Ramp Insert 32.5° H=4.5mm	004-00743	1