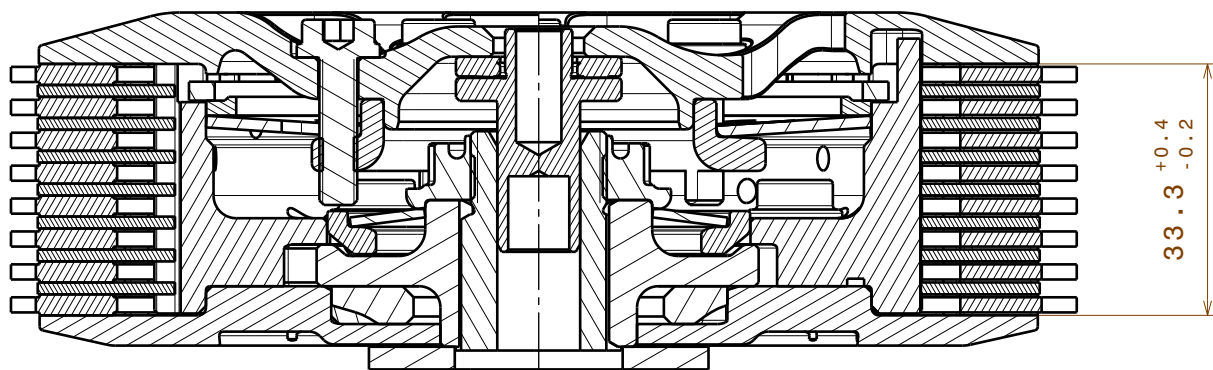
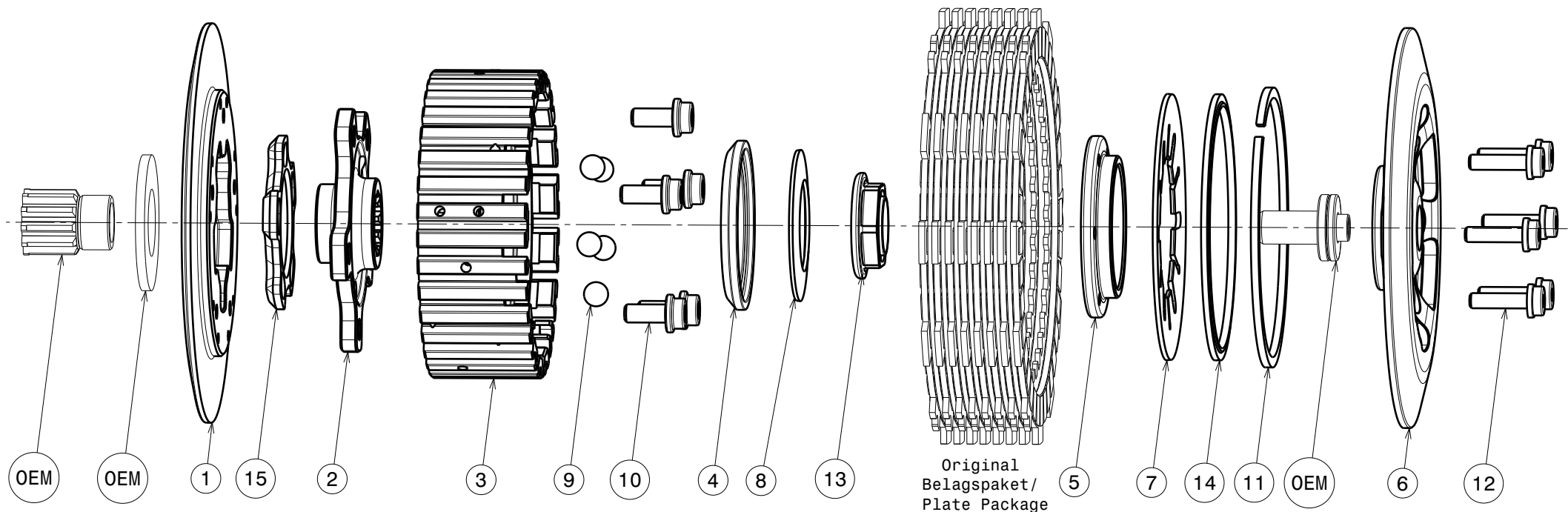


# 004-30003-2 SuterClutch Suzuki RMZ250 2007-2023



**Das angegebene Belagspaketmass ist zwingend einzuhalten!**  
**The plate package thickness must be strictly adhered to!**

| Partlist: 1901 |                                    |                  |          |
|----------------|------------------------------------|------------------|----------|
| ITEM           | PART NAME                          | SRT NUMBER       | QTY      |
| 1              | Back Plate Insert                  | 004-30722        | 1        |
| 2              | Hub Carrier                        | 004-31701        | 1        |
| 3              | Inner Hub                          | 004-31740        | 1        |
| 4              | Release Ring                       | 004-09975        | 1        |
| 5              | Clamp Hub 5mm                      | 004-00505        | 1        |
| 6              | Pressure Plate                     | 004-30941        | 1        |
| 7              | <b>Disk Spring Main ø88 1100N</b>  | 004-88110        | 1        |
| 8              | <b>Torque Limiter Spring 1100N</b> | 004-50110        | 1        |
|                | Torque Limiter Spring 950N         | 004-50095        | 1        |
|                | Torque Limiter Spring 1300N        | 004-50130        | 1        |
| 9              | Ball 8mm                           | 004-17801        | 5        |
| 10             | Bolt M6x14                         | 004-17814        | 5        |
| 11             | Circlip 90mm                       | 004-17804        | 1        |
| 12             | Distance Bolt M5 L=19.5mm          | 004-05195        | 6        |
| 13             | Main Nut MX M18x1.25 L=1.2         | 004-99181212     | 1        |
| 14             | Locking Ring 88mm                  | 004-00688        | 1        |
| 15             | <b>Ramp Insert 27.5°</b>           | <b>004-00721</b> | <b>1</b> |