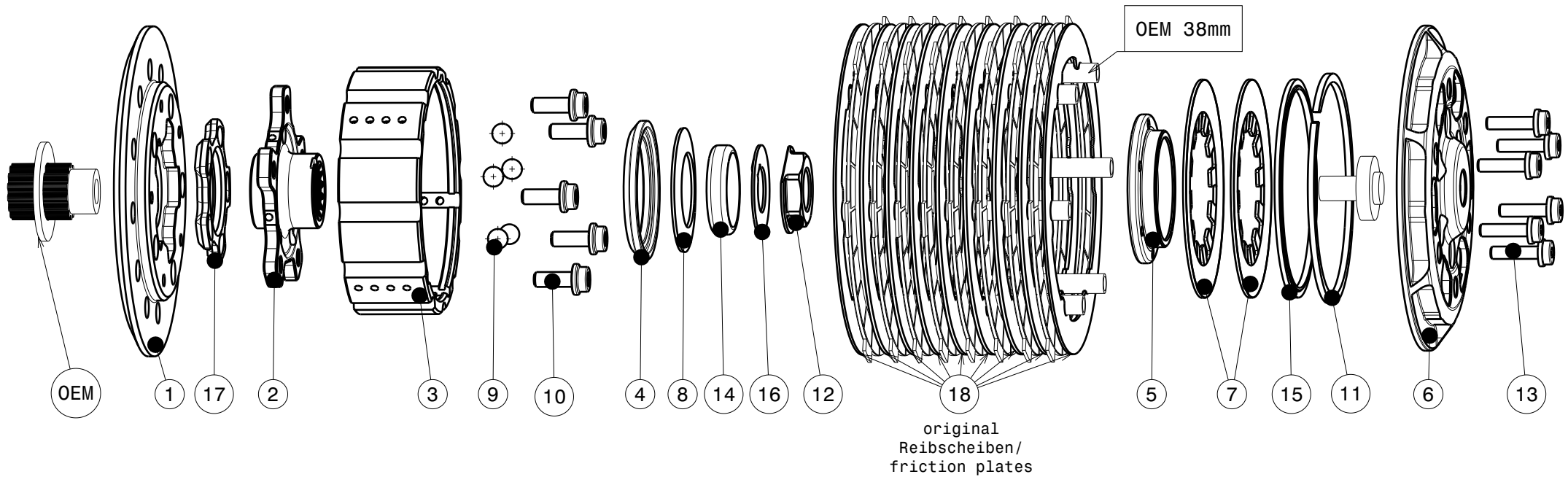
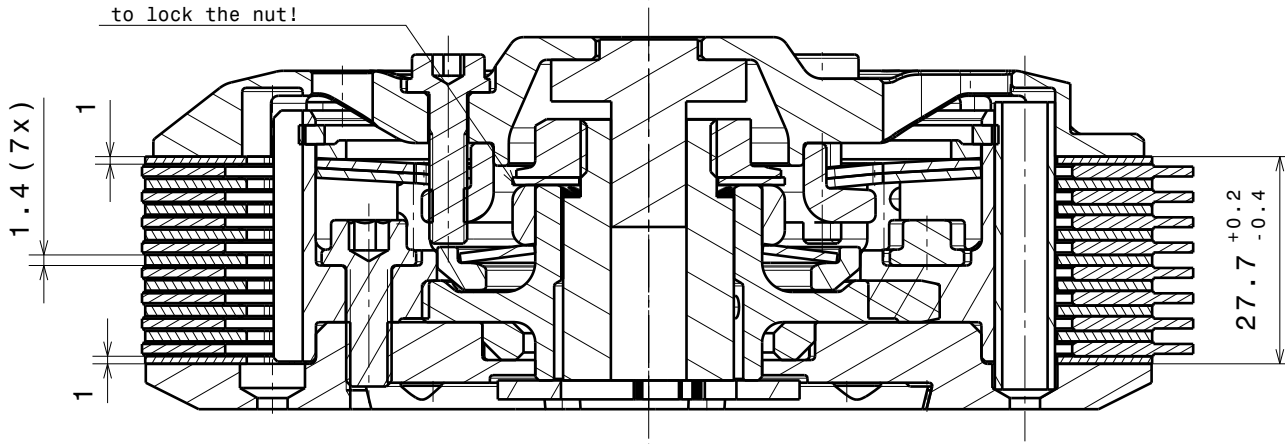


004-28019-1 SuterClutch Ducati Desmo450 MX



-Die Scheibe Nr.16 biegen
um die Mutter zu sichern!
-Bend the washer No.16
to lock the nut!



Das angegebene Paketmass ist zwingend einzuhalten!
The plate package thickness must be strictly adhered to!

ITEM	PART NAME	PART NUMBER	QTY
1	Back Plate	004-28732	1
2	Hub Carrier	004-28702	1
3	Inner Hub	004-55743	1
4	Release Ring	004-09975	1
5	Clamp Hub 6mm	004-00506	1
6	Pressure Plate Ducati 450 MX	004-28959	1
7	Disk Spring Main ø88 700N	004-88070	2
8	Torque Limiter Spring 1100N	004-50110	1
8.1	Torque Limiter Spring 950N	004-50095	1
9	Ball 8mm	004-17801	5
10	Bolt M6x16	004-17816	5
11	Circlip 90mm	004-17804	1
12	Main Nut M18x1	004-28962	1
13	Distance Bolt M5 L=20.0mm	004-05200	6
14	Distance Ring 8.0mm	004-25610	1
15	Locking Ring 88mm	004-00688	1
16	Locking Washer 18/34/1	004-55671	1
17	Ramp Insert 27.5°	004-00721	1
18	Steeldisc Set EVO Ducati 450	004-28830	1