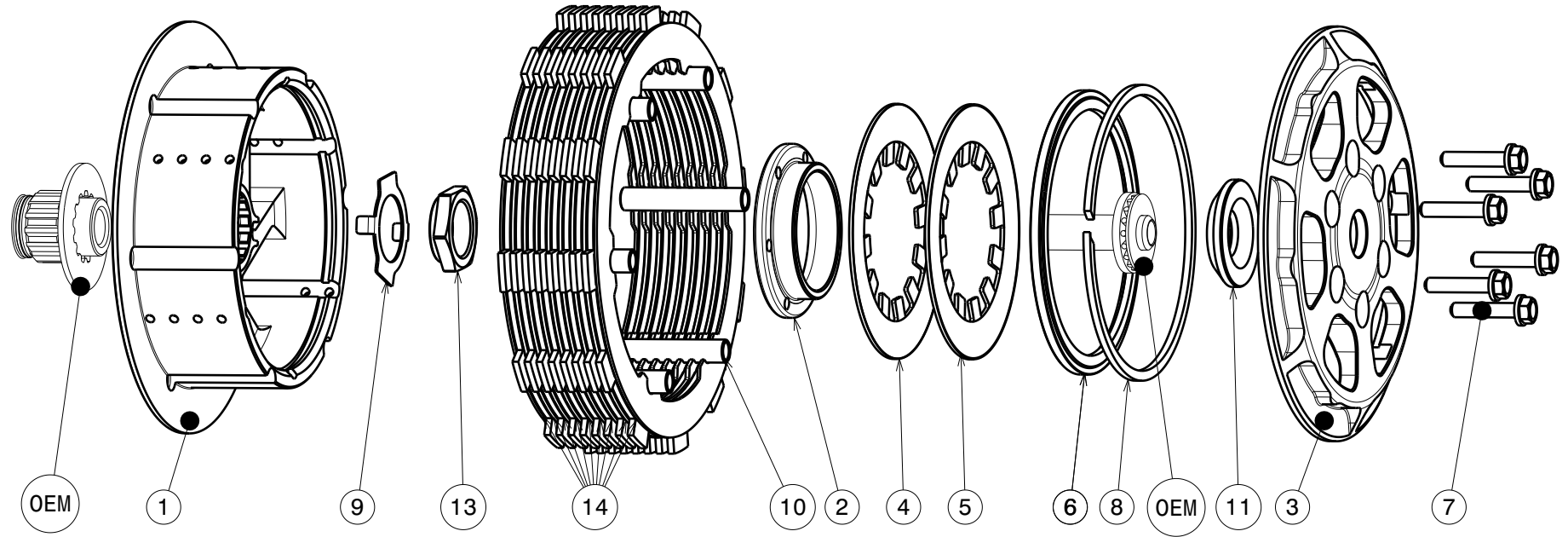
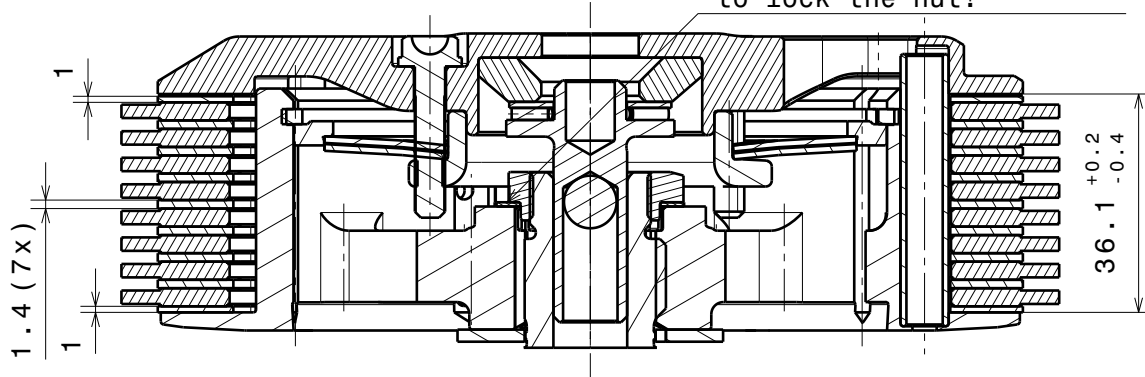


# 004-26058-2 SuterClutch MX-Line EVO

## Yamaha YZ250 00-25



Die Scheibe Nr.9 biegen um die Mutter zu sichern!  
Bend the washer No.9 to lock the nut!



**Das angegebene Belagspaketmass ist zwingend einzuhalten!**  
**The plate package thickness must be strictly adhered to!**

ITEM	PART NAME	PART NUMBER	QTY
1	Inner Hub YZ250 EVO	004-26746	1
2	Clamp Hub 8mm	004-00508	1
3	Pressure Plate YZ250 EVO	004-26951	1
4	<b>Disk Spring Main ø88 700N</b>	<b>004-88070</b>	<b>1</b>
5	<b>Disk Spring Main ø88 600N</b>	<b>004-88060</b>	<b>1</b>
6	Circlip 100mm	004-17833	1
7	Hex Head Bolt M5x25	999-110205025	6
8	Locking Ring 98mm	004-00698	1
9	Locking Washer 23x31x0.7	004-00677	1
10	Hollow Dowel 45mm	004-994408450	6
11	Adapter Pressure Plate YZ250 EVO	004-26970	1
13	Main Nut M20x1	004-26991	1
14	Steeldisc Set EVO Yamaha YZ250	004-26801	1