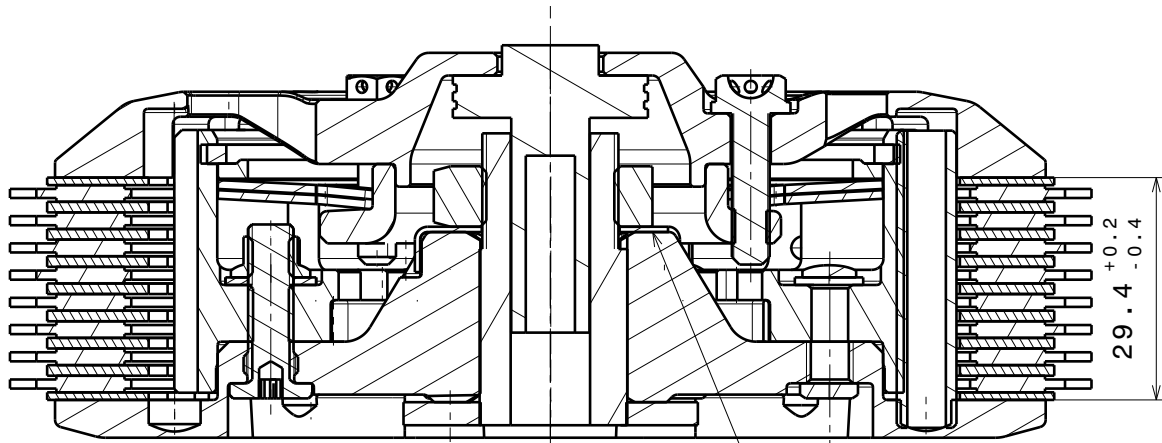
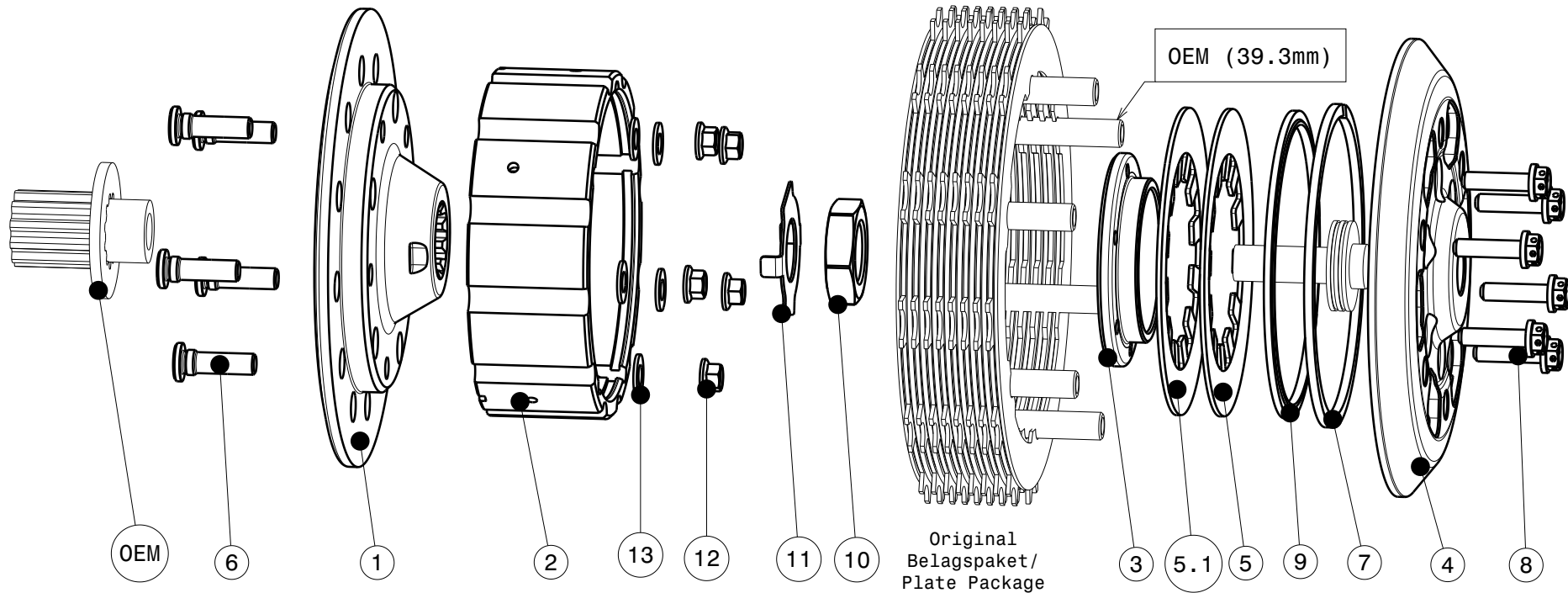


004-26057-2 SuterClutch MX-Line Yamaha YZ450F 2023 Factory



-Die Scheibe Pos.11 biegen um die Mutter zu sichern!
-Bend the washer No.11 to lock the nut!

ITEM	PART NAME	PART NUMBER	QTY
1	Back Plate PD YZ450F 2023	004-26732	1
2	Inner Hub YZ450F	004-26743	1
3	Clamp Hub Alu 6mm	004-00546	1
4	Pressure Plate Nickel	004-26950	1
5	Disk Spring Main ø88 700N	004-88070	1
5.1	Disk Spring Main ø88 800N	004-88080	1
6	Stud Moto2 Backplate	004-12980	5
7	Circlip 90mm	004-17804	1
8	Hex. Head Bolt M5x20 Titan	999-11225020	6
9	Locking Ring 88mm	004-00688	1
10	Nut M18x1	004-998181080	1
11	Locking Washer 18x31x0.7	004-00673	1
12	Flanged Nut self-locking M6	999-12030605	5
13	Washer M6	BN1976-6x12x1.0	5

Das angegebene Belagspaketmass ist zwingend einzuhalten!
The plate package thickness must be strictly adhered to!