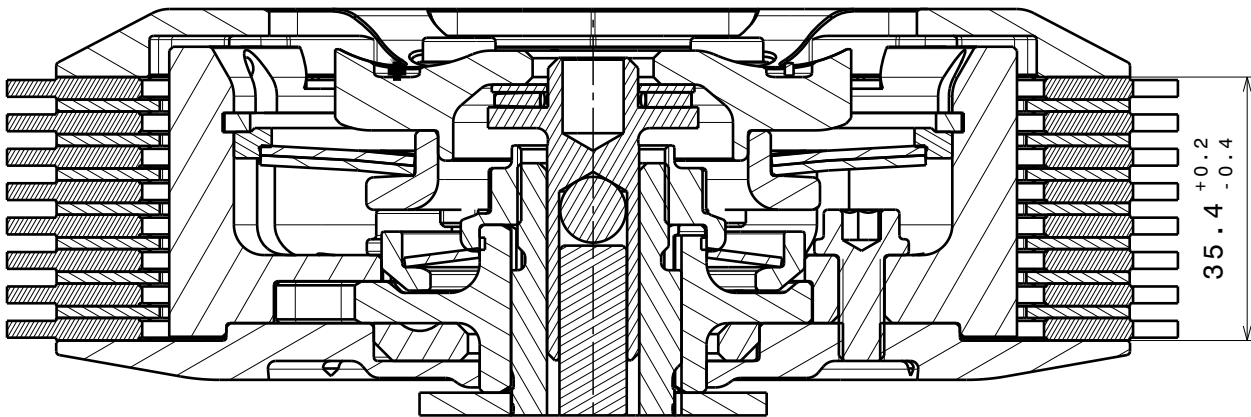
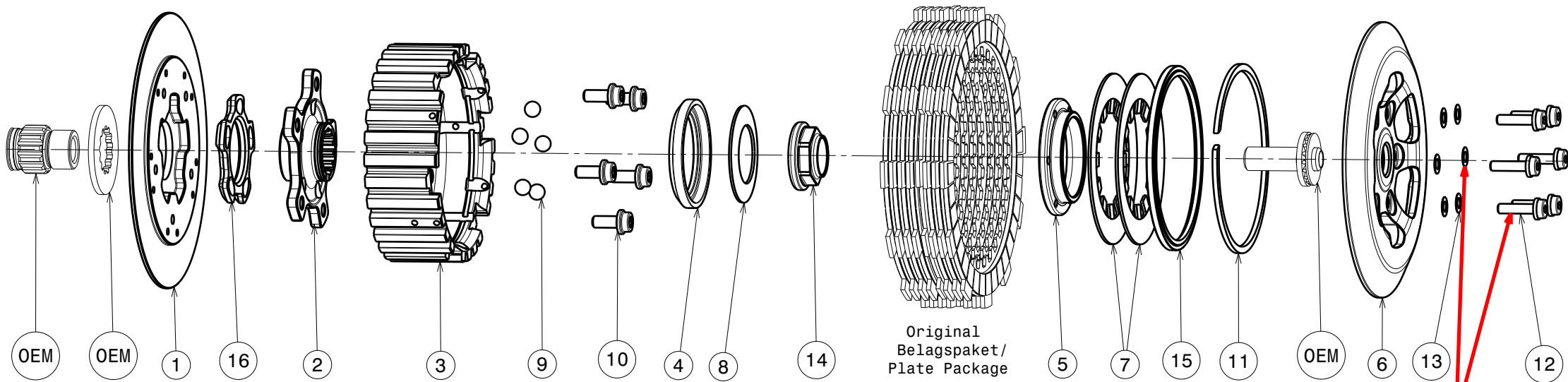


004-26005-6 SuterClutch Yamaha / Fantic 450



Das angegebene Belagspaketmass ist zwingend einzuhalten!
The plate package thickness must be strictly adhered to!

Fantic	Yamaha	
XXF 450	YZ450F	WR450F
2022	2007	2007
	-	-
	2022	2022

ONLY USE SUTER PARTS

Partlist: 1889			
ITEM	PART NAME	SRT NUMBER	QTY
1	Back Plate Insert	004-26724	1
2	Hub Carrier	004-33700	1
3	Inner Hub	004-33741	1
4	Release Ring	004-15975	1
5	Clamp Hub 6mm	004-00506	1
6	Pressure Plate	004-26945	1
7	Disk Spring Main ø88 700N	004-88070	2
8	Torque Limiter Spring 1100N	004-50110	1
	Torque Limiter Spring 950N	004-50095	1
9	Ball 8mm	004-17801	5
10	Bolt M6x14	004-17814	5
11	Circlip 95mm	004-17813	1
12	Distance Bolt M5 L=20.0mm	004-05200	6
13	Distance Washer 0.2mm	004-00002	6
14	Main Nut M20x1 L=3.5	004-99201035	1
15	Locking Ring 95mm	004-00695	1
16	Ramp Insert 27.5°	004-00721	1