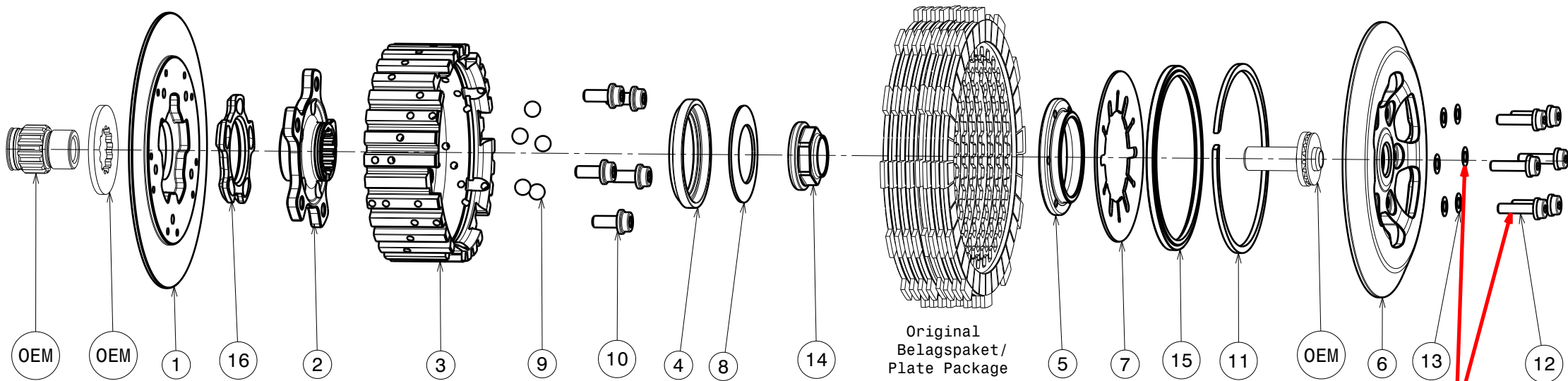
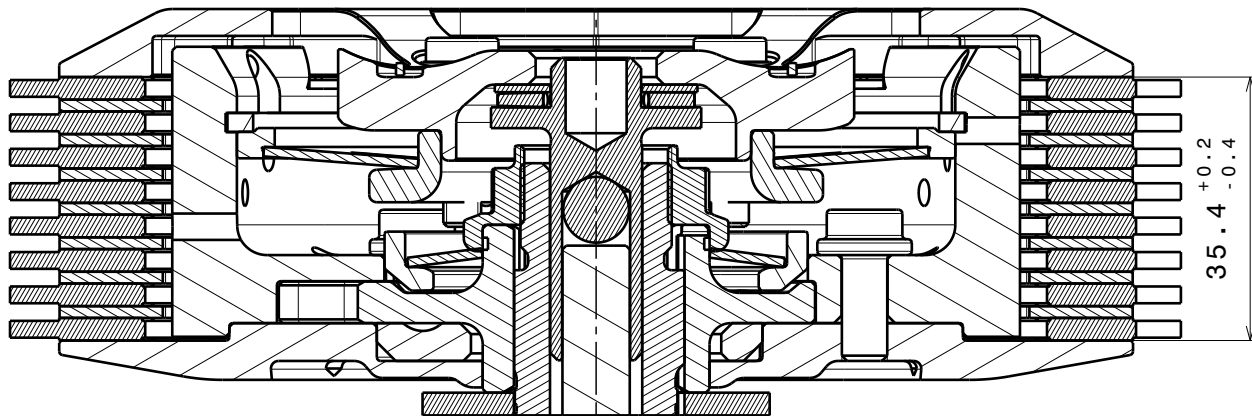


# 004-26005-5 SuterClutch Yamaha / Fantic 450



ONLY USE SUTER PARTS



**Das angegebene Belagspaketmass ist zwingend einzuhalten!**  
**The plate package thickness must be strictly adhered to!**

	Fantic		Yamaha	
	<b>XXF 450</b>	<b>YZ450F</b>	<b>WR450F</b>	
	2022	2007 - 2022	2007 - 2022	

Partlist: 1889			
ITEM	PART NAME	SRT NUMBER	QTY
1	Back Plate Insert	004-26724	1
2	Hub Carrier	004-33700	1
3	Inner Hub	004-33741	1
4	Release Ring	004-15975	1
5	Clamp Hub 5mm	004-00505	1
6	Pressure Plate	004-26945	1
7	<b>Disk Spring Main ø88 1400N</b>	004-88140	1
8	<b>Torque Limiter Spring 1100N</b>	004-50110	1
	Torque Limiter Spring 950N	004-50095	1
9	Ball 8mm	004-17801	5
10	Bolt M6x14	004-17814	5
11	Circlip 95mm	004-17813	1
12	Distance Bolt M5 L=20.0mm	004-05200	6
13	Distance Washer 0.2mm	004-00002	6
14	Main Nut M20x1 L=3.5	004-99201035	1
15	Locking Ring 95mm	004-00695	1
16	<b>Ramp Insert 27.5°</b>	<b>004-00721</b>	<b>1</b>