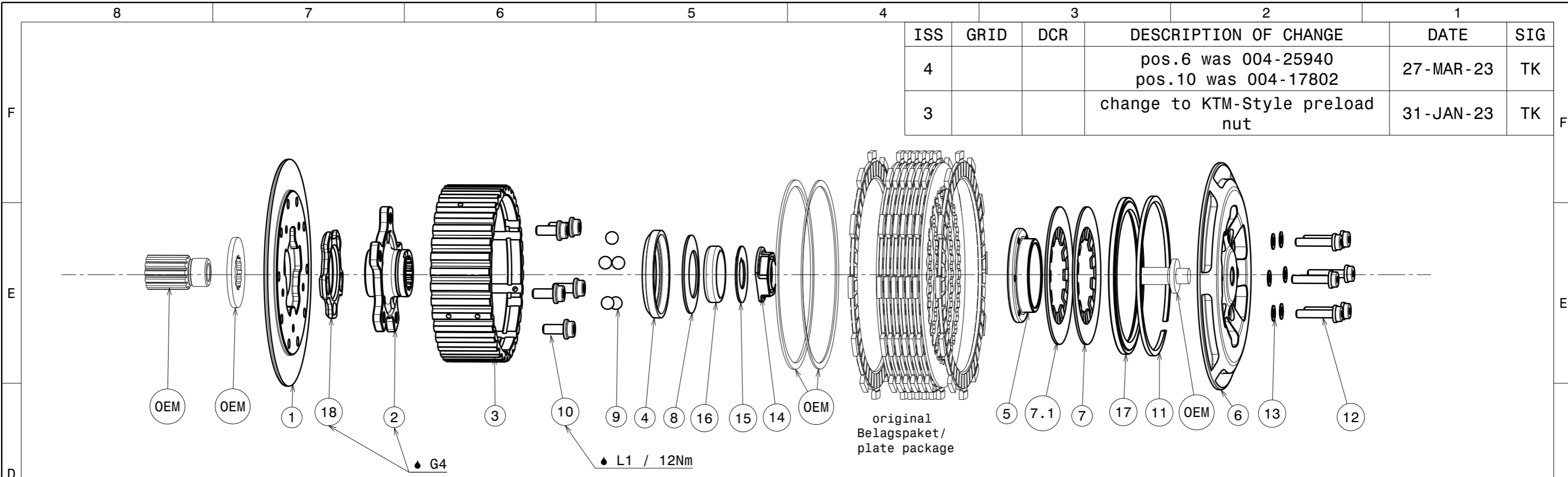
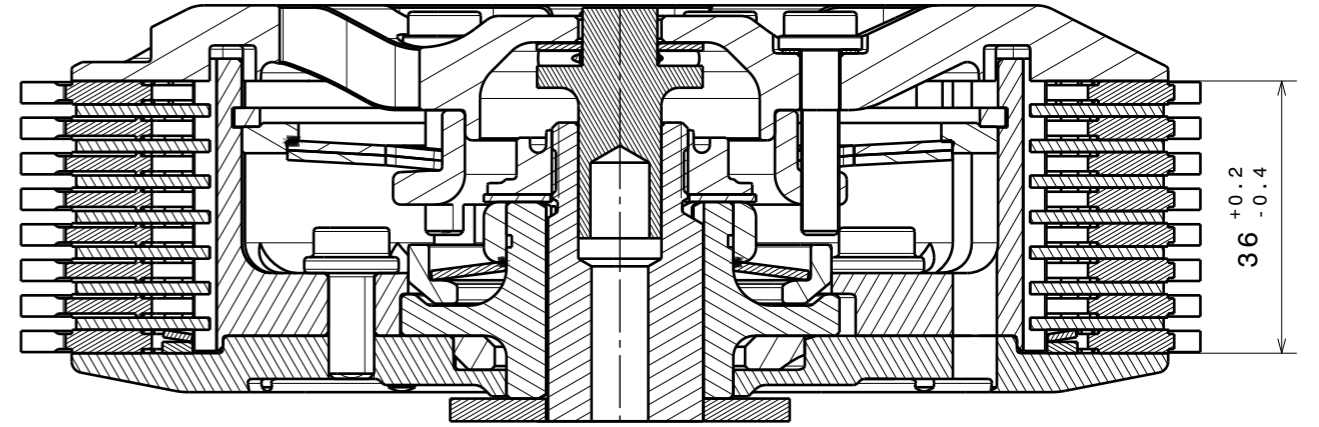


Copyright © SUTER Industries AG / Mettlenstrasse 3 / CH-8488 Turbenthal. Für dieses Dokument behalten wir uns alle Rechte vor. / We reserve all rights in connection with this document. CAD System: CATIA



ISS	GRID	DCR	DESCRIPTION OF CHANGE	DATE	SIG
4			pos.6 was 004-25940 pos.10 was 004-17802	27-MAR-23	TK
3			change to KTM-Style preload nut	31-JAN-23	TK

ITEM	PART NAME	SRT NUMBER	QTY
1	Back Plate	004-25721	1
2	Hub Carrier	004-25701	1
3	Inner Hub RMZ450	004-25740	1
4	Release Ring	004-15975	1
5	Clamp Hub 8mm	004-00508	1
6	Pressure Plate	004-25942	1
7	<b>Disk Spring Main ø88 600N</b>	<b>004-88060</b>	1
7.1	<b>Disk Spring Main ø88 700N</b>	<b>004-88070</b>	1
8	<b>Torque Limiter Spring 1100N</b>	<b>004-50110</b>	1
9	Ball 8mm	004-17801	5
10	Bolt M6x14	004-17814	5
11	Circlip 100mm	004-17833	1
12	Distance Bolt M5 L=24.5mm	004-05245	6
13	Distance Washer 0.5mm	004-00005	6
14	Main Nut MX M18x1.25	004-997181200	1
15	Locking Washer 18/36/1	004-55671	1
16	Distance Ring 8.0mm	004-25610	1
17	Locking Ring 100mm	004-00600	1
18	<b>Ramp Insert 27.5° H=4.5mm</b>	<b>004-00741</b>	1
<b>SETUP MATERIAL</b>			
8.1	Torque Limiter Spring 950N	004-50095	1
8.2	Torque Limiter Spring 1300N	004-50130	1
<b>ADDITIONAL MATERIAL</b>			
	SuterClutch packing compl. 2017	004-52042	1
	Sticker SuterClutch 7x1.5cm	004-52050	2
	Sticker SuterClutch 15x3.3cm	004-52051	2
	Installation Manual SuterClutch	004-52060	1
	Set Gap Measuring	004-52100	1
	Drawing "Kunde"	-	1



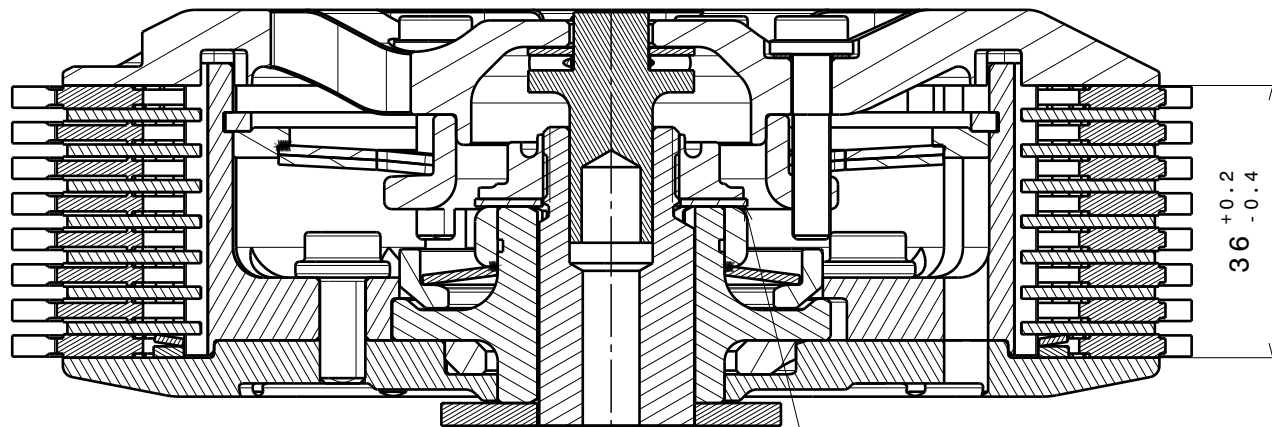
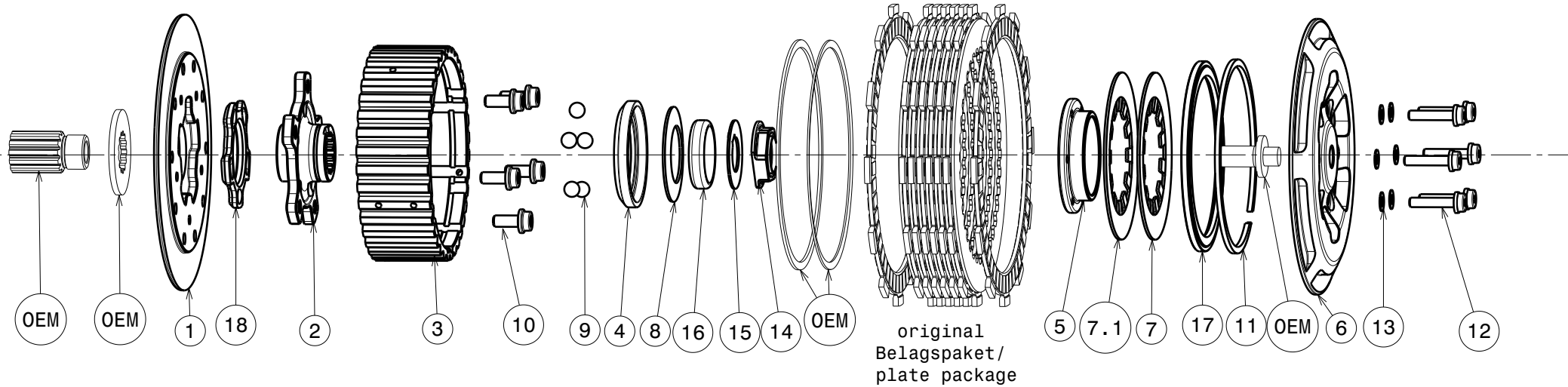
Fehlende Masse und Angaben sind dem 3D-CAD-Datensatz zu entnehmen  
For missing dimensions and details see 3D-CAD data set

Werkstoff (DIN) / Material (DIN) <b>SEE PARTLIST</b>	Oberfläche/Surface DIN ISO 1302	Kantenbruch / break edges ISO 13715	Toleranzangabe / Tolerance DIN ISO 2768 - mK DIN EN ISO 13920 - BF	Anzahl Prüfmerkmale / Number inspection characteristics 0
Zertifikat / Attest R <input type="checkbox"/> O <input type="checkbox"/> K <input type="checkbox"/> H <input type="checkbox"/>	Oberflächenbehandlung / Surface treatment -			Prüflos / inspection lot [%] Q-Level / Level of quality L5
Massstab/Scale 1:1	Gewicht/Weight 0g	Format A3	Blatt/Sheet 1/2	Datum/Date 08.11.2023
Gezeichnet/ designed t.kuhn		Name		
Geprüft/ checked				
Freigegeben/ approved				
Artikel Nr. / Part No. <b>004-25004</b>				Rev. <b>4</b>



SuterClutch Suzuki RM-Z450 08-23  
SuterClutch Suzuki RM-Z450 08-23

# 004-25004-4 SuterClutch Suzuki RMZ 450 2008-2023



Bend the washer No.15 to lock the nut!

**Das angegebene Belagspaketmass ist zwingend einzuhalten!**  
**The plate package thickness must be strictly adhered to!**

ITEM	PART NAME	SRT NUMBER	QTY
1	Back Plate	004-25721	1
2	Hub Carrier	004-25701	1
3	Inner Hub RMZ450	004-25740	1
4	Release Ring	004-15975	1
5	Clamp Hub 8mm	004-00508	1
6	Pressure Plate	004-25942	1
7	<b>Disk Spring Main ø88 600N</b>	004-88060	1
7.1	<b>Disk Spring Main ø88 700N</b>	004-88070	1
	<b>Torque Limiter Spring 1100N</b>	004-50110	1
8	Torque Limiter Spring 950N	004-50095	1
	Torque Limiter Spring 1300N	004-50130	1
9	Ball 8mm	004-17801	5
10	Bolt M6x14	004-17814	5
11	Circlip 100mm	004-17833	1
12	Distance Bolt M5 L=24.5mm	004-05245	6
13	Distance Washer 0.5mm	004-00005	6
14	Main Nut MX M18x1.25	004-997181200	1
15	Locking Washer 18/36/1	004-55671	1
16	Distance Ring 8.0mm	004-25610	1
17	Locking Ring 100mm	004-00600	1
18	<b>Ramp Insert 27.5° H=4.5mm</b>	<b>004-00741</b>	<b>1</b>