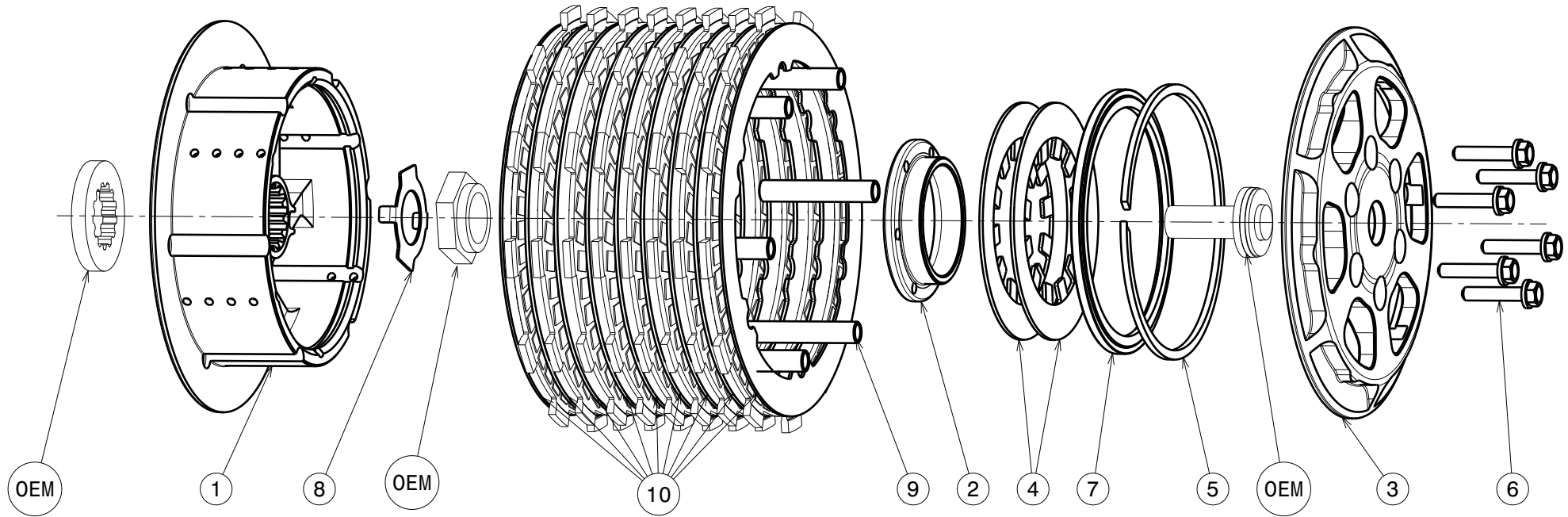
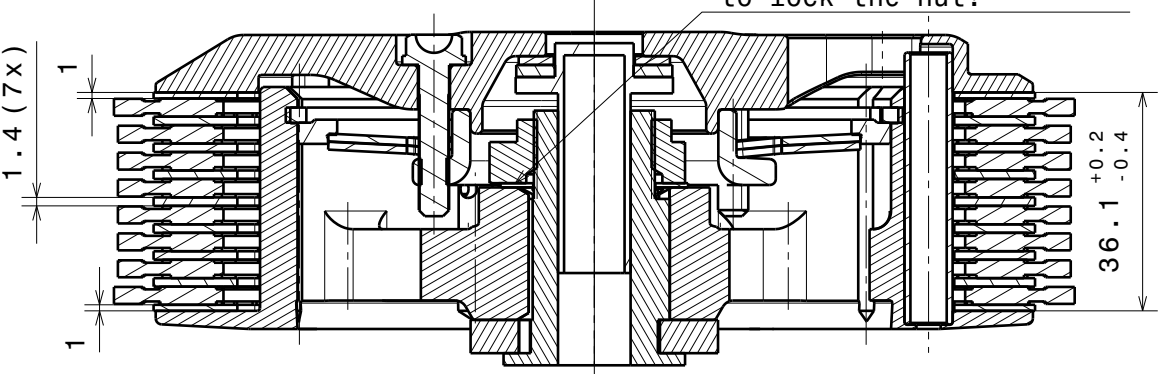


004-23053-4 SuterClutch MX-Line EVO

Kawasaki KX450F 21-26



Die Scheibe Nr.8 biegen
um die Mutter zu sichern!
Bend the washer No.8
to lock the nut!



Das angegebene Belagpaketmass ist zwingend einzuhalten!
The plate package thickness must be strictly adhered to!

ITEM	PART NAME	PART NUMBER	QTY
1	Inner Hub KX450F	004-23742	1
2	Clamp Hub 8mm	004-00508	1
3	Pressure Plate KX450F	004-23944	1
4	Disk Spring Main ø88 800N	004-88080	2
5	Circlip 100mm	004-17833	1
6	Bolt M5x25	999-110205025	6
7	Locking Ring 98mm	004-00698	1
8	Locking Washer 20x31x0.7	004-00672	1
9	Hollow Dowel 45mm	004-994408450	6
10	Steeldisc Set EVO Kawasaki KX450F	004-23800	1