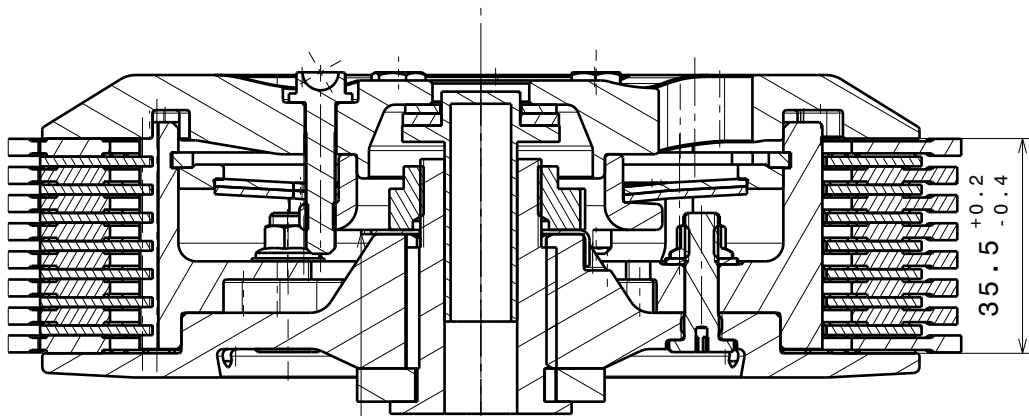
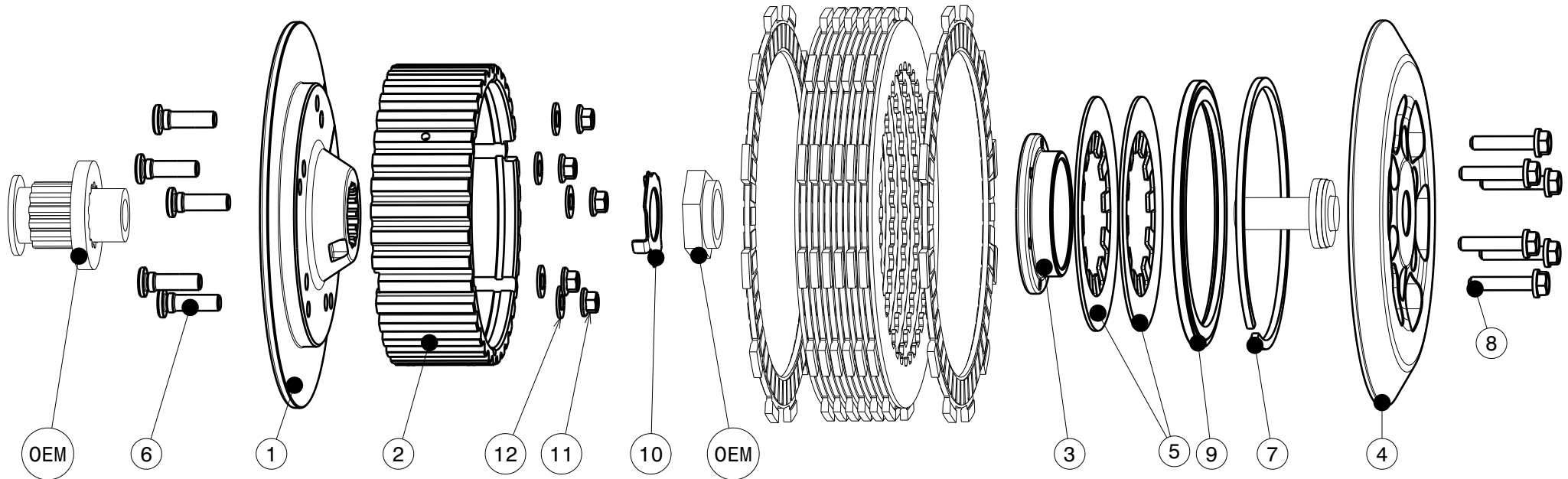


004-23052-2 SuterClutch MX-Line Kawasaki KX450F 2021-23 FACTORY



Die Scheibe Nr.10 biegen
um die Mutter zu sichern!
Bend the washer No.10
to lock the nut!

Das angegebene Belagspaketmass ist zwingend einzuhalten!
The plate package thickness must be strictly adhered to!

ITEM	PART NAME	SRT NUMBER	QTY
1	Back Plate KX450F PD 21 Factory	004-23726	1
2	Inner Hub KX450F 21	004-23741	1
3	Clamp Hub 8mm	004-00508	1
4	Pressure Plate KX450F 21 Factory	004-23943	1
5	Disk Spring Main ø88 800N	004-88080	2
6	Stud Bolt M6	004-12980	5
7	Circlip 100mm	004-17833	1
8	Hex. Head Bolt M5x25 Titan	999-112205025	6
9	Locking Ring 100mm	004-00600	1
10	Locking Washer 20x31x0.7	004-00672	1
11	Nut M6	999-12030605	5
12	Washer M6	BN1976-6x12x1.0	5