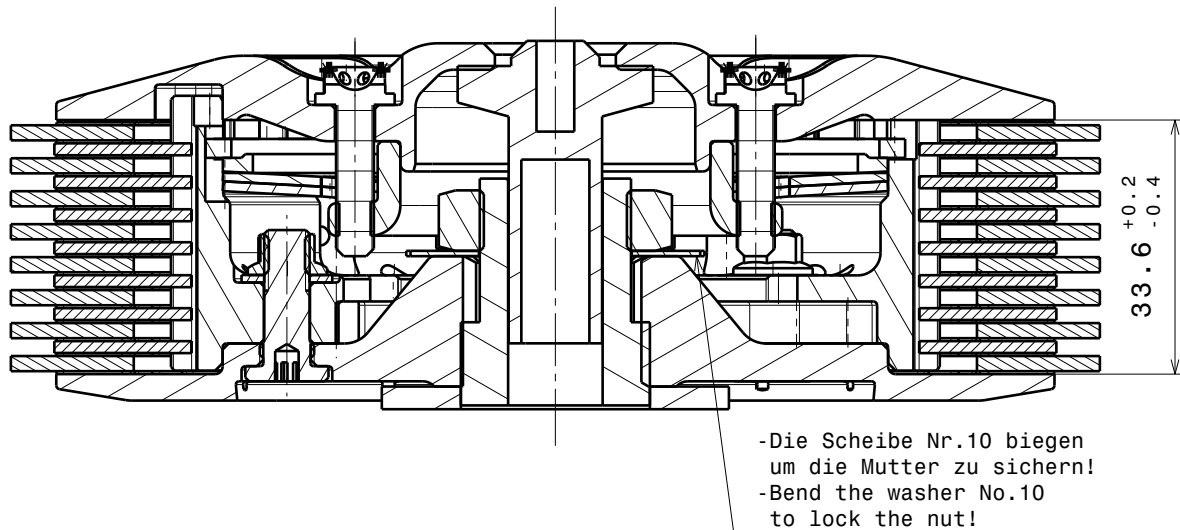
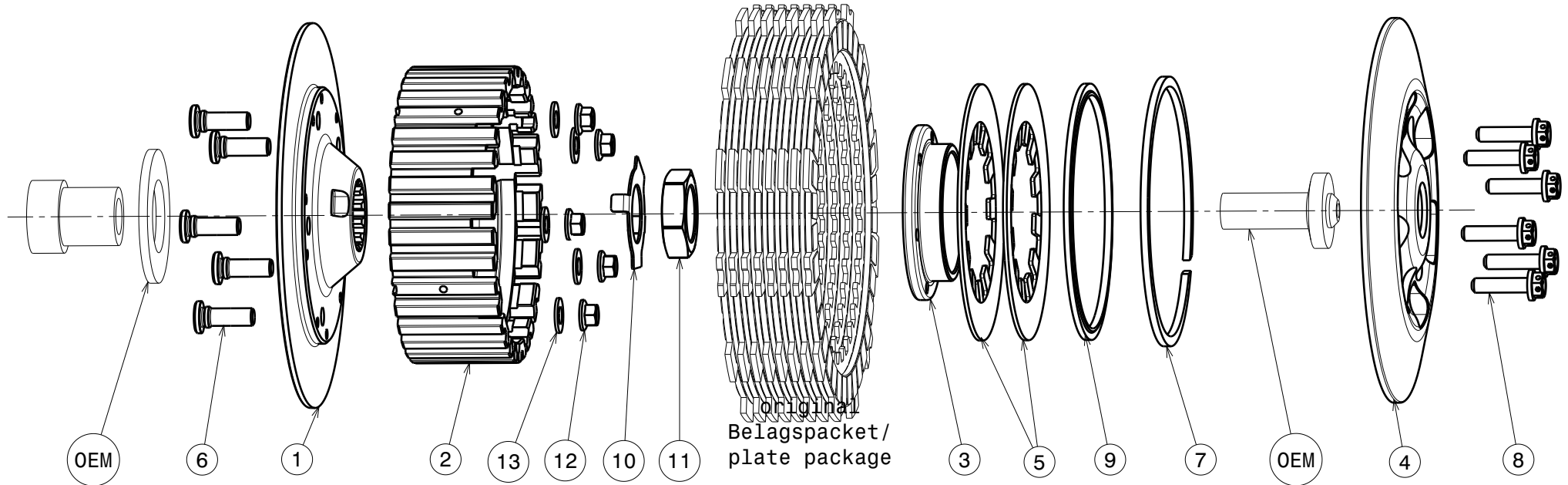


004-22052-2 SuterClutch MX-Line Yamaha YZ250F 2019-2023

FACTORY



ITEM	PART NAME	SRT NUMBER	QTY
1	Back Plate PD Factory	004-22728	1
2	Inner Hub	004-31740	1
3	Clamp Hub 8mm	004-00508	1
4	Pressure Plate Factory	004-22946	1
5	Disk Spring Main ø88 700N	004-88070	2
6	Stud Backplate L18	004-12981	5
7	Circlip 90mm	004-17804	1
8	Hex. Head Bolt M5x20 Titan	999-112205020	6
9	Locking Ring 88mm	004-00688	1
10	Locking Washer 20/31/0.7 MX	004-00672	1
11	Nut M20x1	004-998201080	1
12	Nut M6	999-12030605	5
13	Washer M6	BN1976-6x12x1.0	5

Das angegebene Belagspaketmass ist zwingend einzuhalten!
The plate package thickness must be strictly adhered to!