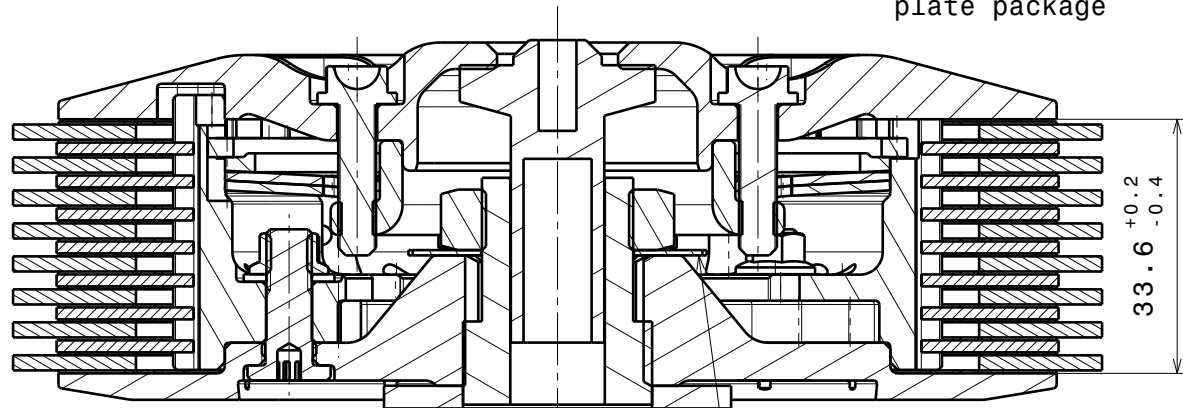
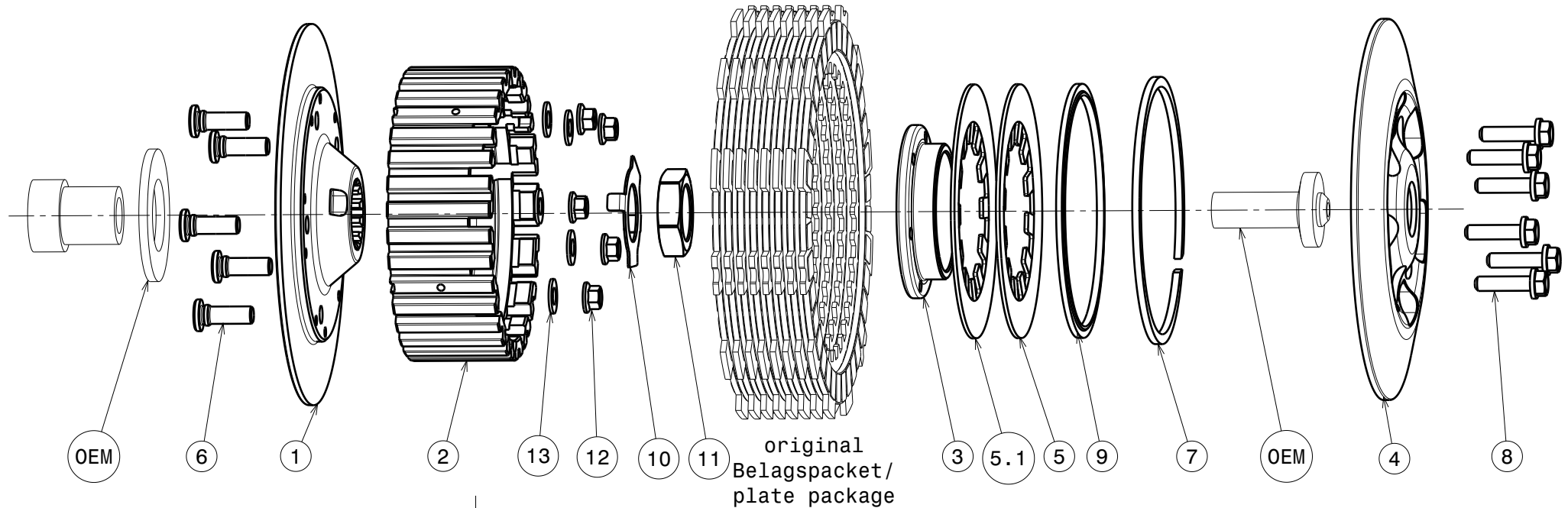


004-22051-3 SuterClutch MX-Line Yamaha / Fantic 250



-Die Scheibe Nr.10 biegen um die Mutter zu sichern!
-Bend the washer No.10 to lock the nut!

Partlist: 2521			
ITEM	PART NAME	SRT NUMBER	QTY
1	Back Plate PD	004-22727	1
2	Inner Hub	004-31740	1
3	Clamp Hub 8mm	004-00508	1
4	Pressure Plate	004-22945	1
5	Disk Spring Main ø88 600N	004-88060	1
5.1	Disk Spring Main ø88 600N	004-88060	1
6	Stud Backplate L18	004-12981	5
7	Circlip 90mm	004-17804	1
8	Bolt M5x20	999-110205020	6
9	Locking Ring 88mm	004-00688	1
10	Locking Washer 20/31/0.7 MX	004-00672	1
11	Nut M20x1	004-998201080	1
12	Nut M6	999-12030605	5
13	Washer M6	BN1976-6x12x1.0	5

Das angegebene Belagspaketmass ist zwingend einzuhalten!
The plate package thickness must be strictly adhered to!

	Fantic	Yamaha	
	XXF 250	YZ250F	WR250F
	2022	2019	2020
	-	-	-
	2023	2023	2022