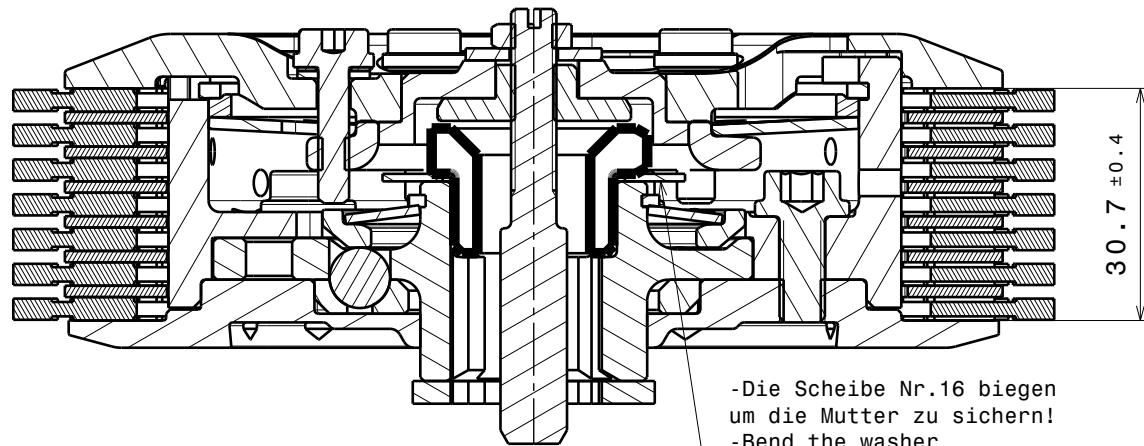
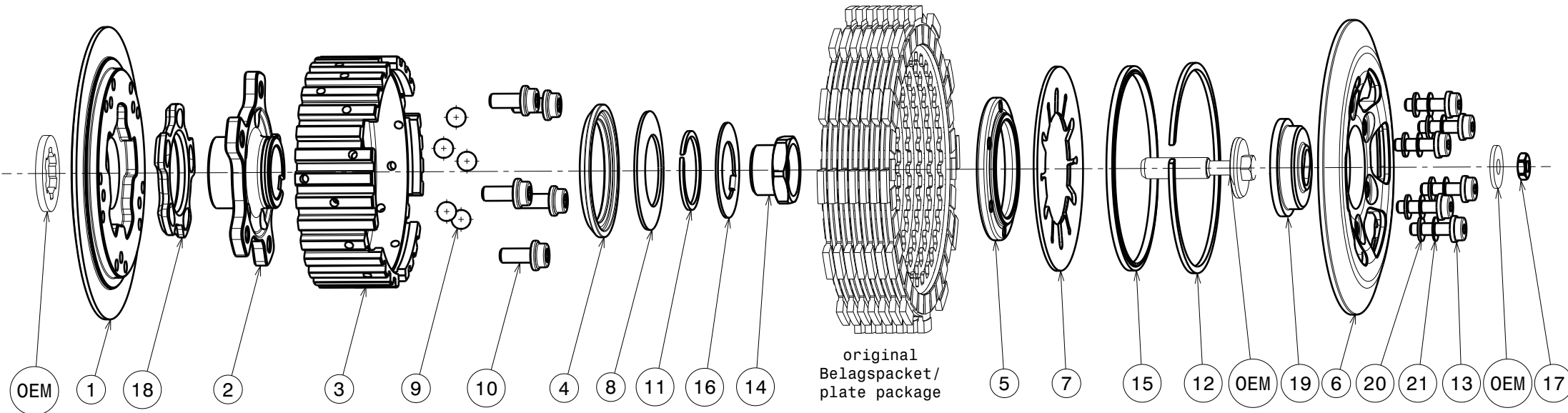


004-22004-2 SuterClutch Yamaha WR250X/R 2008-17



-Die Scheibe Nr.16 biegen um die Mutter zu sichern!
-Bend the washer No.16 to lock the nut!

Das angegebene Belagspaketmass ist zwingend einzuhalten!
The plate package thickness must be strictly adhered to!

ITEM	PART NAME	SRT NUMBER	QTY
1	Back Plate Insert	004-22724	1
2	Hub Carrier	004-22702	1
3	Inner Hub	004-22742	1
4	Release Ring 3.1x5.0	004-00976	1
5	Clamp Hub 2mm	004-00502	1
6	Pressure Plate	004-22941	1
7	Disk Spring Main ø86 1000N	004-86100	1
8	Torque Limiter Spring 950N	004-50095	1
	Torque Limiter Spring 850N	004-50085	1
	Torque Limiter Spring 1100N	004-50110	1
9	Ball 8mm	004-17801	5
10	Bolt M6x14	004-17814	5
11	Circlip 30mm	004-17803	1
12	Circlip 86mm	004-17886	1
13	Distance Bolt M5 L=18.0mm	004-05180	6
14	Nut M16x1	004-22955	1
15	Locking Ring 86mm	004-00686	1
16	Locking Washer 22/39/1	004-07670	1
17	Nut M6	BN124-M6	1
18	Ramp Insert 30° H=4.5mm	004-00742	1
19	Adapter Pressure Plate	004-22949	1
20	Distance Washer 1.0mm	004-00010	6
21	Distance Washer 0.5mm	004-00005	6