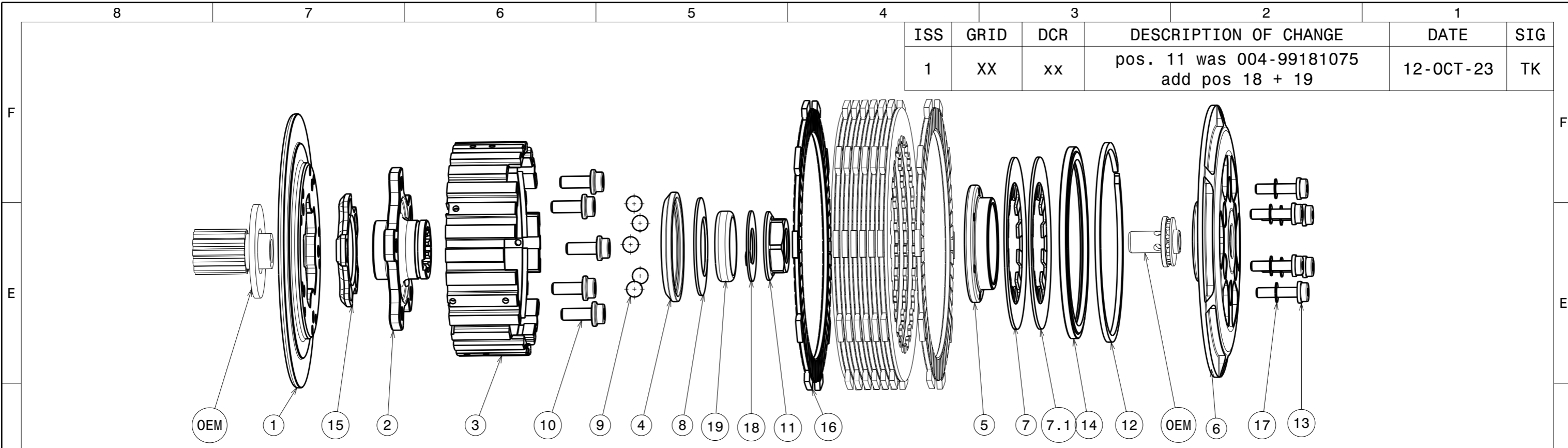
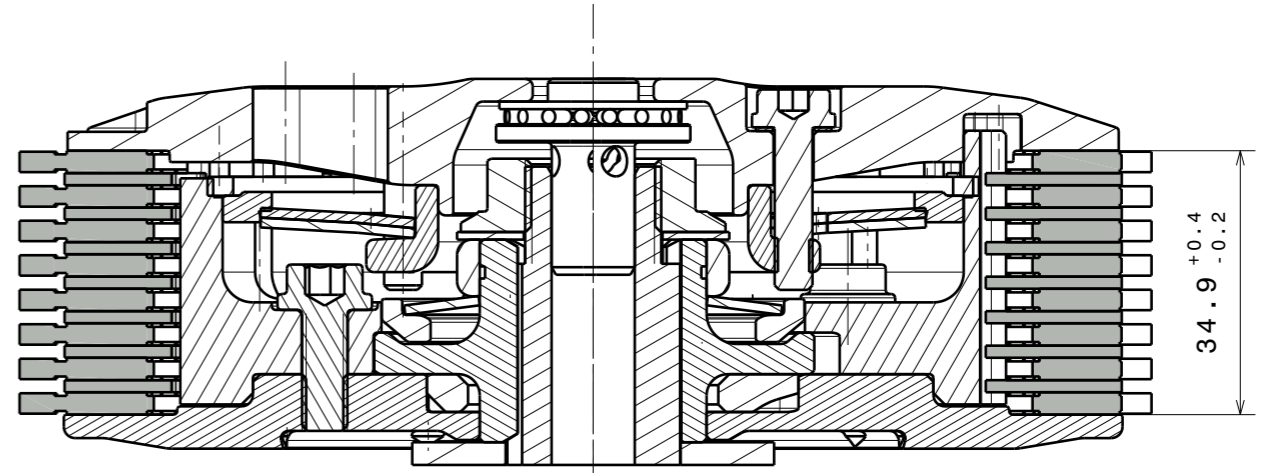


Copyright © SUTER Industries AG / Mettlenstrasse 3 / CH-8488 Turbenthal. Für dieses Dokument behalten wir uns alle Rechte vor. / We reserve all rights in connection with this document.



ISS	GRID	DCR	DESCRIPTION OF CHANGE	DATE	SIG
1	XX	xx	pos. 11 was 004-99181075 add pos 18 + 19	12-OCT-23	TK

ITEM	PART NAME	SRT NUMBER	QTY
1	Back Plate	004-21722	1
2	Hub Carrier	004-21701	1
3	Inner Hub	004-21741	1
4	Release Ring	004-09975	1
5	Clamp Hub 7mm	004-00507	1
6	Pressure Plate	004-21951	1
7	Disk Spring Main ø88 700N	004-88070	1
7.1	Disk Spring Main ø88 600N	004-88060	1
8	Torque Limiter Spring 1100N	004-50110	1
9	Ball 8mm	004-17801	5
10	Bolt M6x16	004-17816	5
11	Main Nut M18x1	004-26960	1
12	Circlip 100mm	004-17833	1
13	Distance Bolt M5 L=21.5mm	004-05215	6
14	Locking Ring 98mm	004-00698	1
15	Ramp Insert 27.5°	004-00721	1
16	Friction Disk	004-21220	1
17	Distance Washer 0.5mm	004-00005	6
18	Locking Washer 18/36/1	004-55671	1
19	Distance Ring 7.5mm	004-21610	1
<b>SETUP MATERIAL</b>			
8.1	Torque Limiter Spring 950N	004-50095	1
8.2	Torque Limiter Spring 1300N	004-50130	1
<b>ADDITIONAL MATERIAL</b>			
	SuterClutch packing compl. 2017	004-52042	1
	Sticker SuterClutch 7x1.5cm	004-52050	2
	Sticker SuterClutch 15x3.3cm	004-52051	2
	Installation Manual SuterClutch	004-52060	1
	Set Gap Measuring	004-52100	1
	Drawing "Kundenzeichnung"	-	1

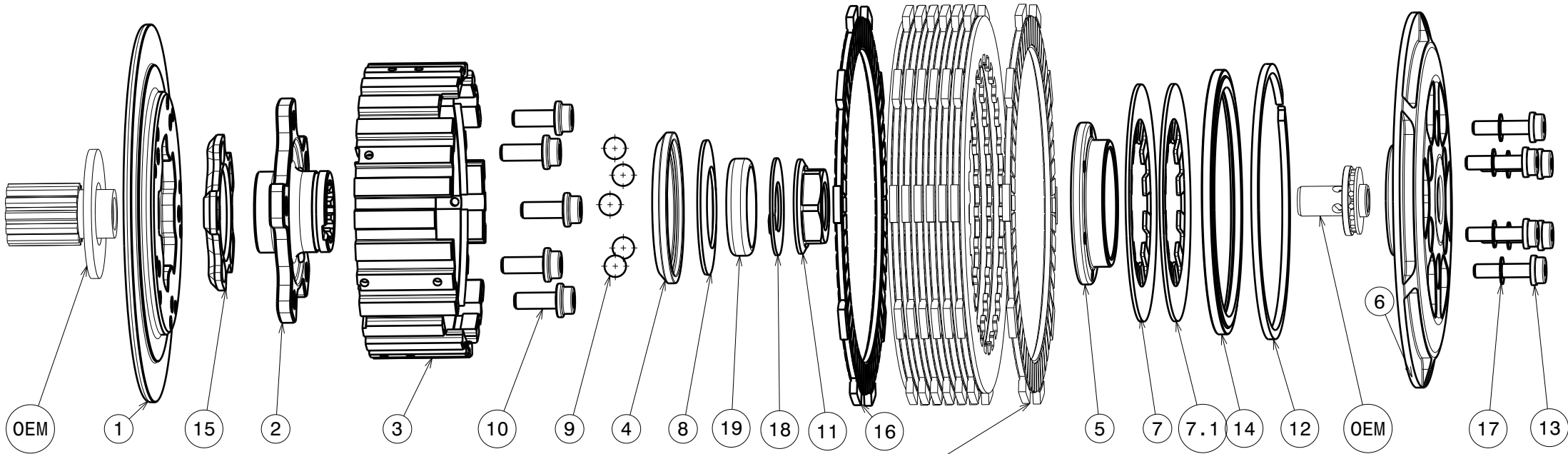


**ASSEMBLY NOTES:**

- USE GREASE MOLYKOTE G4700 ON THE RAMP INSERT BALLWAY (Pos.15)
- USE GREASE MOLYKOTE G4700 ON THE HUB CARRIER (Pos.2)
- TIGHTEN M6-BOLTS (Pos.10) WITH 12[Nm] AND LOCTITE 272/ERGO 4455

Werkstoff (DIN) / Material (DIN) <b>SEE PARTLIST</b>	Oberfläche/Surface DIN ISO 1302	Kantenbruch / break edges ISO 13715	0	Anzahl Prüfmerkmale / Number inspection characteristics
Zertifikat / Attest R <input type="checkbox"/> O <input type="checkbox"/> K <input type="checkbox"/> H <input type="checkbox"/>	Oberflächenbehandlung / Surface treatment -	Toleranzangabe / Tolerance DIN ISO 2768 - mK DIN EN ISO 13920 - BF	-	L5 Prüflös / inspection lot [%] Q-Level / Level of quality
Massstab/Scale 1:1	Gewicht/Weight 1416g	Format A3	Blatt/Sheet 1/2	Datum/Date 12.10.2023
		SuterClutch Honda CRF450R 2021-23		Name t.kuhn
		SuterClutch Honda CRF450R 2021-23		Geprüft/checked 12.10.2023 f.kunz
		004-21011		Freigegeben/approved 12.10.2023 t.kuhn
		Artikel Nr. / Part No. <b>004-21011</b>		Rev. <b>1</b>

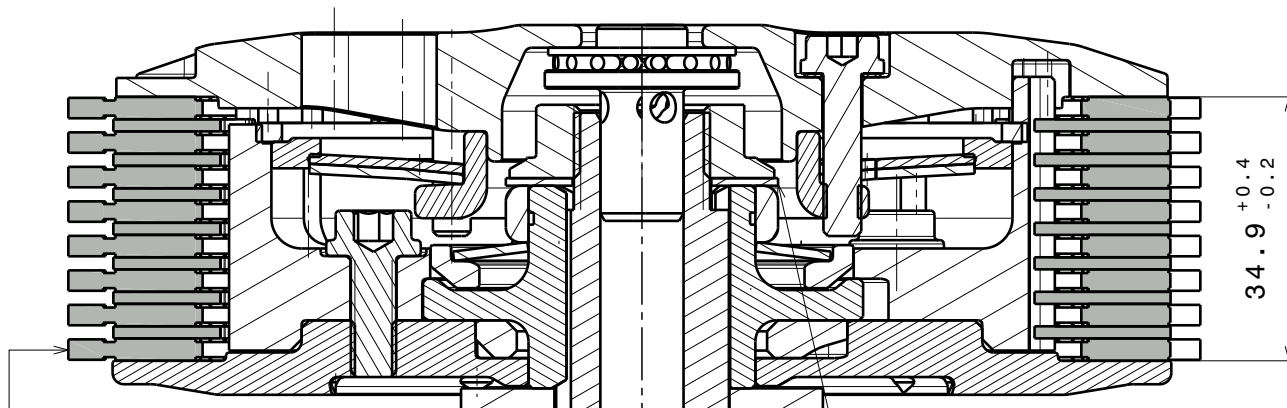
# 004-21011-1 SuterClutch Honda CRF 450R 2021-2023



Achten Sie auf die korrekte Reihenfolge der ersten Reibscheibe, wie sie im originalen Handbuch beschrieben wird.  
Please note the correct order of the first friction disk as shown in the OEM manual.

**!!Bei falscher Reihenfolge wird erhöhter Verschleiss an Druck- und Grundplatte auftreten!!**  
**!!Assembled in wrong order will result in higher wear on the pressure- and backplate!!**

ITEM	PART NAME	SRT NUMBER	QTY
1	Back Plate	004-21722	1
2	Hub Carrier	004-21701	1
3	Inner Hub	004-21741	1
4	Release Ring	004-09975	1
5	Clamp Hub 7mm	004-00507	1
6	Pressure Plate	004-21951	1
7	<b>Disk Spring Main ø88 700N</b>	<b>004-88070</b>	<b>1</b>
7.1	<b>Disk Spring Main ø88 600N</b>	<b>004-88060</b>	<b>1</b>
	<b>Torque Limiter Spring 1100N</b>	<b>004-50110</b>	<b>1</b>
8	Torque Limiter Spring 950N	004-50095	1
	Torque Limiter Spring 1300N	004-50130	1
9	Ball 8mm	004-17801	5
10	Bolt M6x16	004-17816	5
11	Main Nut M18x1	004-26960	1
12	Circlip 100mm	004-17833	1
13	Distance Bolt M5 L=21.5mm	004-05215	6
14	Locking Ring 98mm	004-00698	1
15	<b>Ramp Insert 27.5°</b>	<b>004-00721</b>	<b>1</b>
16	Friction Disk	004-21220	1
17	Distance Washer 0.5mm	004-00005	6
18	Locking Washer 18/36/1	004-55671	1
19	Distance Ring 7.5mm	004-21610	1



-Die Scheibe Nr.18 biegen um die Mutter zu sichern!  
-Bend the washer No.18 to lock the nut!

Diese Reibscheibe muss durch die mitgelieferte (Pos.16) ersetzt werden  
This friction disk has to be replaced with the delivered one (Pos.16)

**Das angegebene Belagspaketmass ist zwingend einzuhalten!**  
**The plate package thickness must be strictly adhered to!**