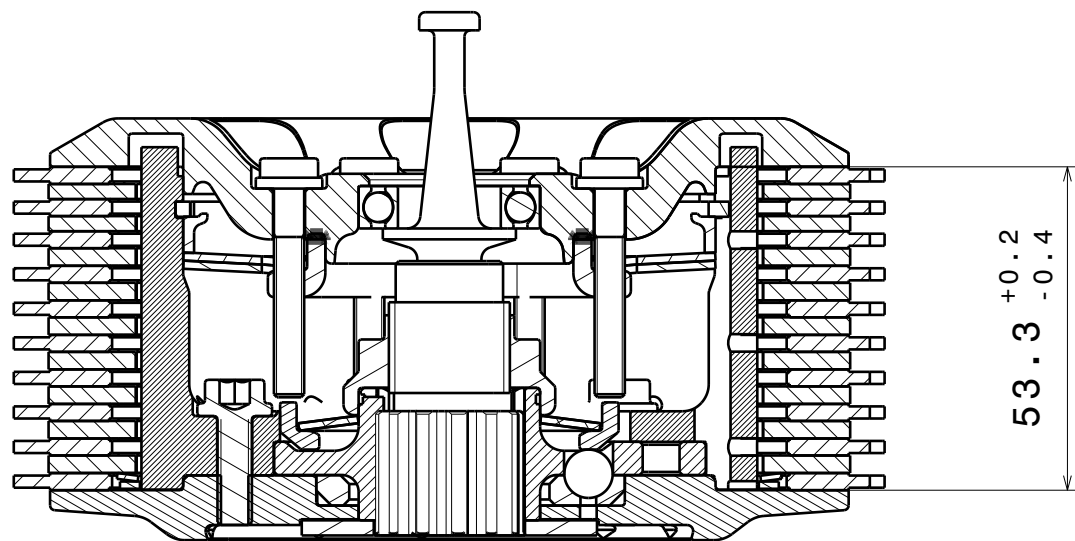
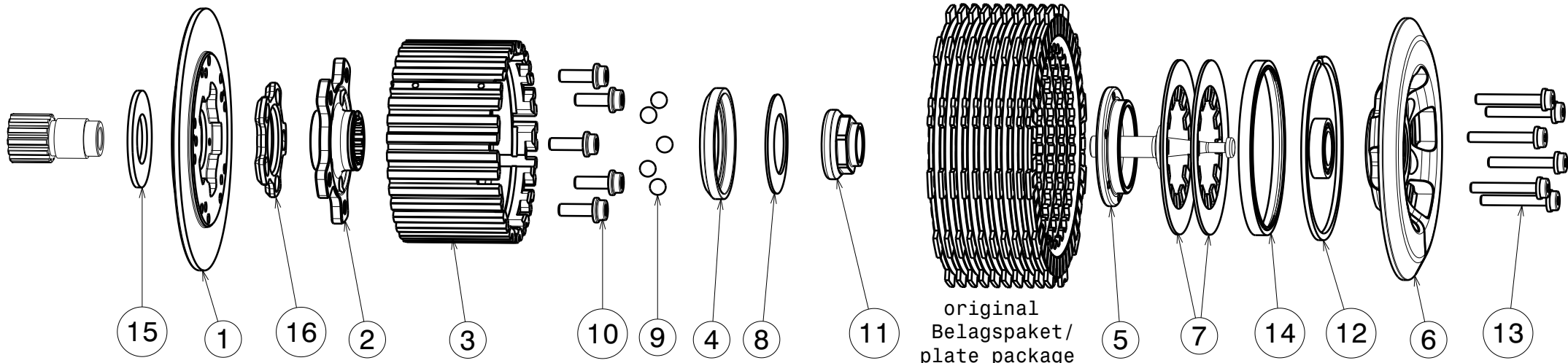


004-18001-6 SuterClutch Kawasaki ZX10R 04-23



Das angegebene Belagspaketmass ist zwingend einzuhalten!
The plate package thickness must be strictly adhered to!

ITEM	PART NAME	SRT NUMBER	QTY
1	Back Plate ZX10 Racks	004-18722	1
2	Hub Carrier ZX10	004-18701	1
3	Inner Hub ZX10	004-18740	1
4	Release Ring	004-15975	1
5	Clamp Hub 6mm	004-00506	1
6	Pressure Plate	004-18940	1
7	Disk Spring Main ø88 800N	004-88080	2
8	Torque Limiter Spring 1100N	004-50110	1
	Torque Limiter Spring 950N	004-50095	1
	Torque Limiter Spring 1300N	004-50130	1
9	Ball 8mm	004-17801	5
10	Bolt M6x18	004-17807	5
11	Main Nut M20x1.5 L=4.5mm	004-999201545	1
12	Circlip 90mm	004-17804	1
13	Distance Bolt M5 L=34.5mm	004-05345	6
14	Locking Ring 88mm	004-18688	1
15	Thrust Washer 25x49x2.5	004-18660	1
16	Ramp Insert 37.5°	004-00725	1