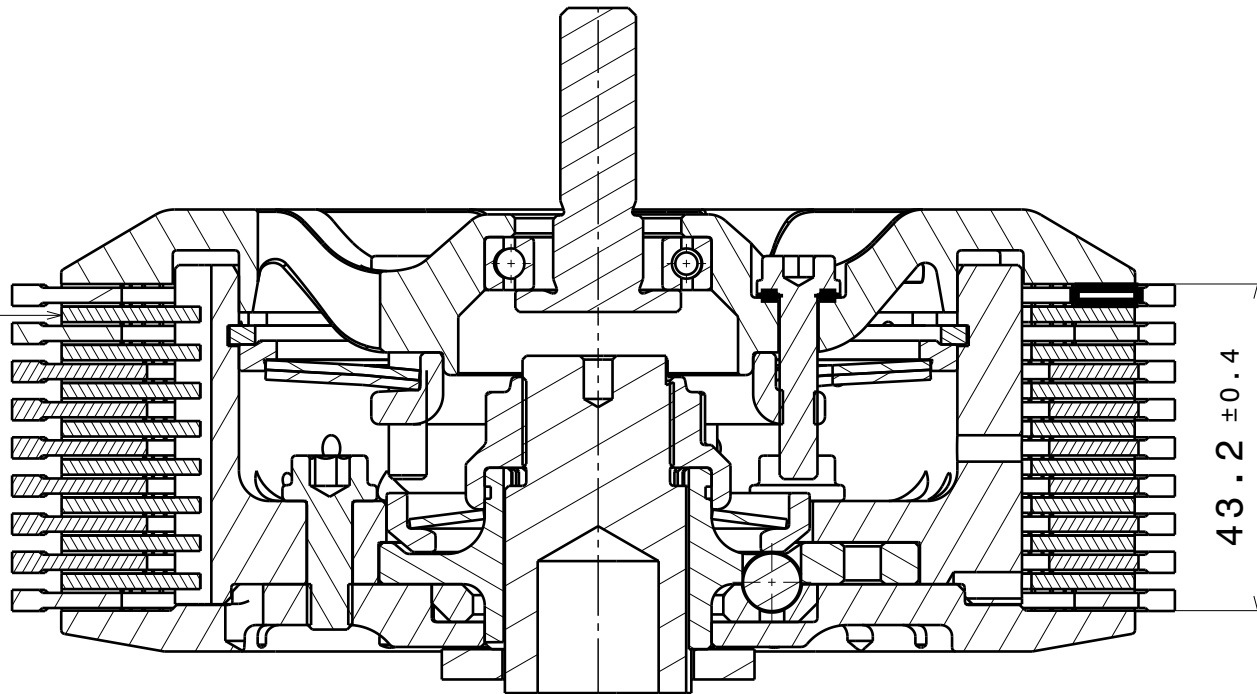
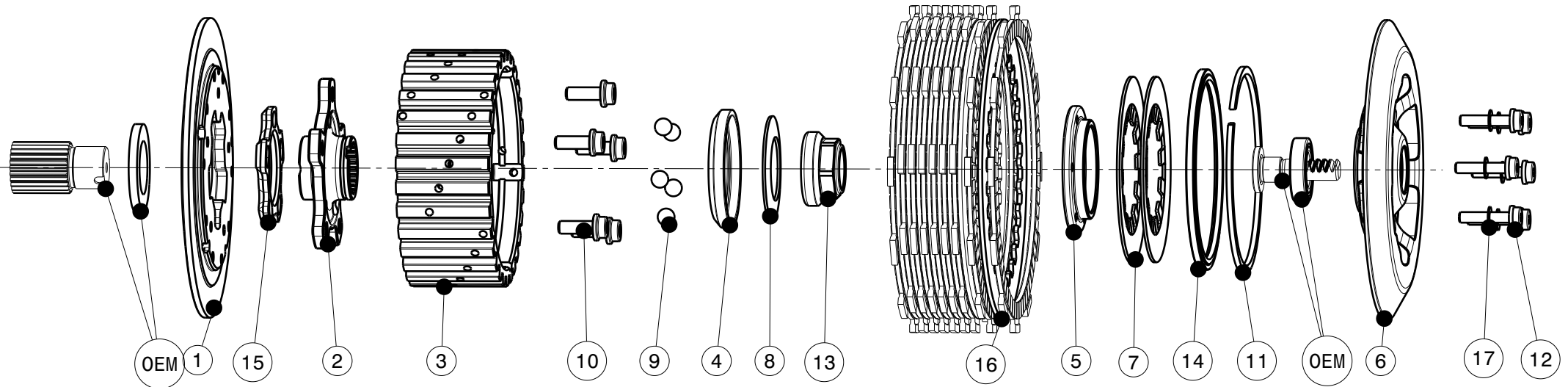


004-15009-1 SuterClutch Yamaha MT-09 18-23



Diese Stahlscheibe muss durch die mitgelieferte (Pos.16) ersetzt werden
 This steel disk has to be replaced with the delivered one (Pos.16)
Das angegebene Belagpaketmass ist zwingend einzuhalten!
The plate package thickness must be strictly adhered to!

ITEM LIST (3215)

ITEM	PART NAME	SRT NUMBER	QTY
1	BACK PLATE	004-15723	1
2	HUB CARRIER	004-15704	1
3	INNER HUB	004-15740	1
4	RELEASE RING	004-15975	1
5	KLAMP HUB 5mm	004-00505	1
6	PRESSURE PLATE	004-15944	1
7	DISC SPRING MAIN ø88 600N	004-88060	1
7.1	DISC SPRING MAIN ø88 700N	004-88070	1
8	TORQUE LIMITER SPRING 950N	004-50095	1
8.1	TORQUE LIMITER SPRING 1100N	004-50110	1
8.2	TORQUE LIMITER SPRING 850N	004-50085	1
9	BALL 8mm	004-17801	5
10	BOLT M6x17	004-17802	5
11	CIRCLIP 95mm	004-17813	1
12	DISTANCE BOLT M5x24.5	004-05245	6
13	MAIN NUT M20x1 L=5.5	004-999201055	1
14	LOCKING RING 95	004-00695	1
15	RAMP INSERT 35°	004-00724	1
16	STEEL DISC 2.0mm	004-15923	1
17	Distance Washer 0.5mm	004-00005	6