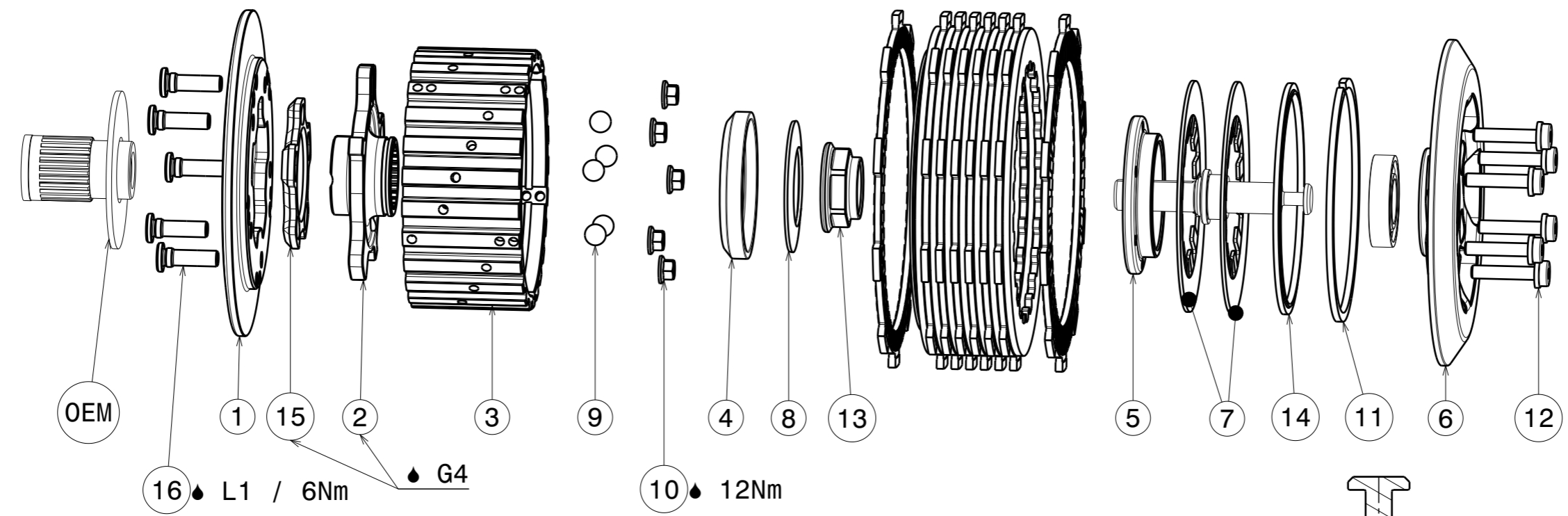
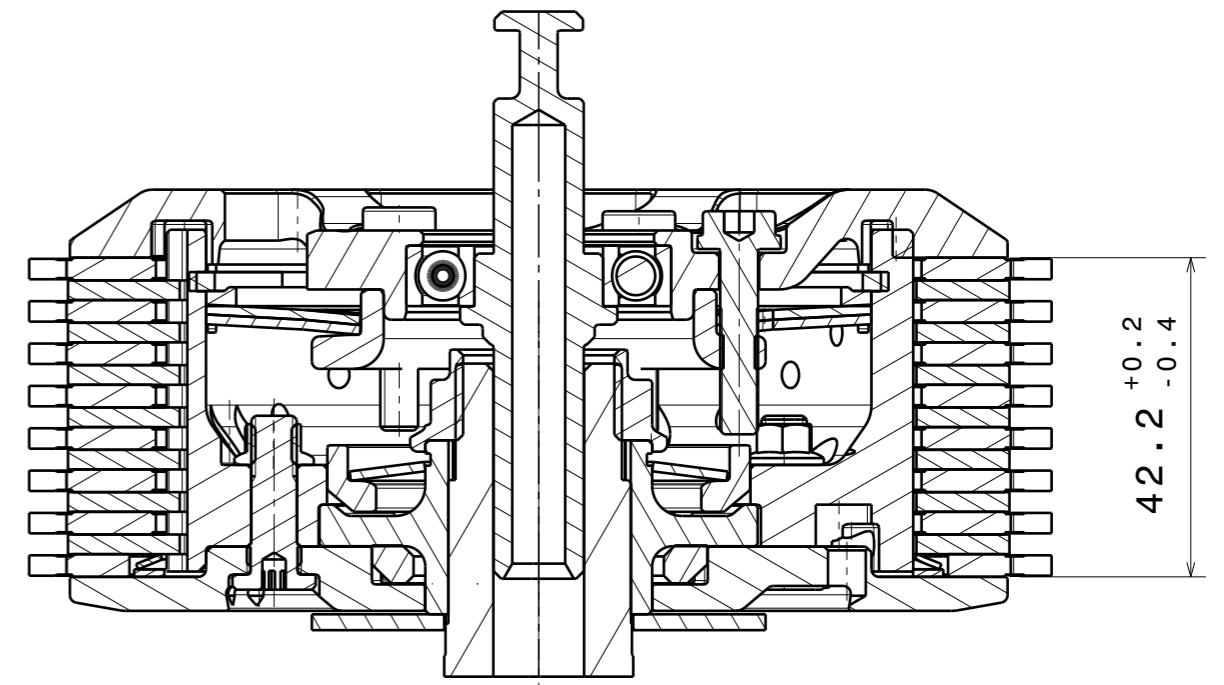


Copyright © SUTER Industries AG / Mettlenstrasse 3 / CH-8488 Turbenthal. Für dieses Dokument behalten wir uns alle Rechte vor. / We reserve all rights in connection with this document.  
CAD System: CATIA

ISS	GRID	DCR	DESCRIPTION OF CHANGE	DATE	SIG
3	XX	xx	change to double spring	10-NOV-23	TK



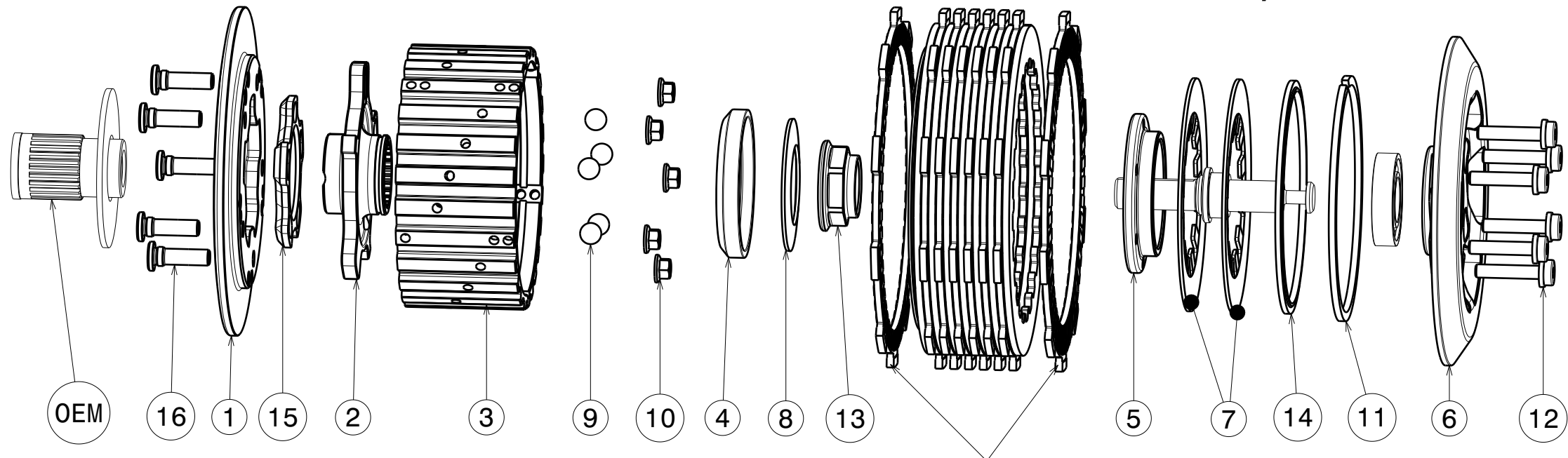
ITEM	PART NAME	SRT NUMBER	QTY
1	BACK PLATE	004-12725	1
2	HUB CARRIER	004-12705	1
3	INNER HUB	004-12745	1
4	RELEASE RING	004-12975	1
5	CLAMP HUB 6mm	004-00506	1
6	PRESSURE PLATE	004-12948	1
7	<b>DISK SPRING MAIN ø88 700N</b>	<b>004-88070</b>	2
8	<b>TORQUE LIMITER SPRING 1500N</b>	<b>004-50150</b>	1
9	BALL 8mm	004-17801	5
10	NUT M6	999-12030605	5
11	CIRCLIP ø90mm	004-17804	1
12	DISTANCE BOLT M5 L=24.5mm	004-05245	6
13	RACING NUT M22x1	004-999221031	1
14	LOCKING RING ø88mm	004-00688	1
15	<b>RAMP INSERT 30°</b>	<b>004-00722</b>	1
16	Studs M6	004-12980	5
<b>SETUP MATERIAL</b>			
8.1	Torque Limiter Spring 1300N	004-50130	1
8.2	Torque Limiter Spring 1700N	004-50170	1
<b>ADDITIONAL MATERIAL</b>			
	SuterClutch packing compl. 2017	004-52042	1
	Sticker SuterClutch 7x1.5cm	004-52050	2
	Sticker SuterClutch 15x3.3cm	004-52051	2
	Installation Manual SuterClutch	004-52060	1
	Set Gap Measuring	004-52100	1
	Drawing "Kunde"	-	1



Fehlende Masse und Angaben sind dem 3D-CAD-Datensatz zu entnehmen  
For missing dimensions and details see 3D-CAD data set

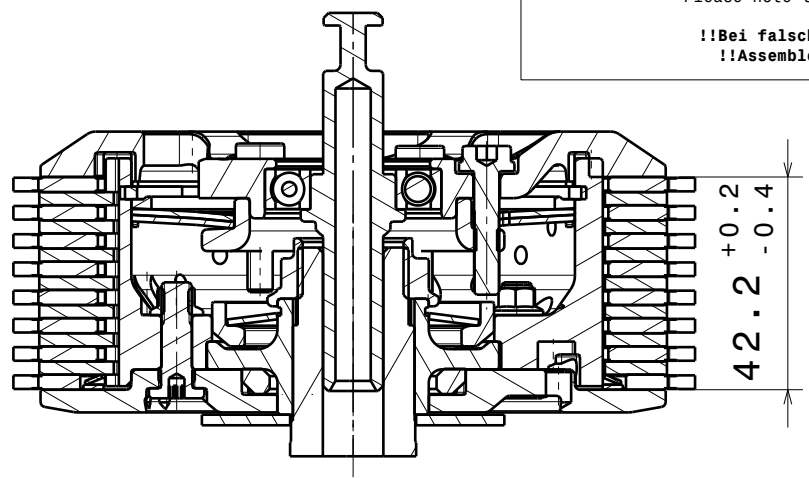
Werkstoff (DIN) / Material (DIN) <b>SEE PARTLIST</b>	Oberfläche/Surface DIN ISO 1302	Kantenbruch / break edges ISO 13715	Toleranzangabe / Tolerance DIN ISO 2768 - mK DIN EN ISO 13920 - BF	Anzahl Prüfmerkmale / Number inspection characteristics 0
Zertifikat / Attest R <input type="checkbox"/> O <input type="checkbox"/> K <input type="checkbox"/> H <input type="checkbox"/>	Oberflächenbehandlung / Surface treatment -	Format A3	Blatt/Sheet 1/2	Prüflot / inspection lot [%] Q-Level / Level of quality L5
Massstab/Scale 1:1	Gewicht/Weight 1338g	Datum/Date 24.11.2022	Name g.monterastelli	Gezeichnet/ designed
<b>SUTER INDUSTRIES</b>	SuterClutch Honda CBR600RR 03-16	Geprüft/ checked 10.11.2023	f.kunz	Freigegeben/ approved 13.11.2023
SuterClutch Honda CBR600RR 03-16			Artikel Nr. / Part No. <b>004-12003</b>	Rev. <b>3</b>

# 004-12003-3 SuterClutch Honda CBR600RR / Race



Achten Sie auf die korrekte Reihenfolge der ersten und letzten Reibscheibe, wie sie im originalen Handbuch beschrieben wird.  
 Please note the correct order of the first and last friction disk as shown in the OEM manual.

**!!Bei falscher Reihenfolge wird erhöhter Verschleiss an Druck- und Grundplatte auftreten!!**  
**!!Assembled in wrong order will result in higher wear on the pressure- and backplate!!**



**Das angegebene Belagspaketmass ist zwingend einzuhalten!**  
**The plate package thickness must be strictly adhered to!**

CBR600 RR	CBR600 RR Race
2003	2021
-	-
2016	2023

ITEM	PART NAME	SRT NUMBER	QTY
1	BACK PLATE FOR INSERT	004-12725	1
2	HUB CARRIER	004-12705	1
3	INNER HUB	004-12745	1
4	RELEASE RING	004-12975	1
5	CLAMP HUB 6mm	004-00506	1
6	PRESSURE PLATE	004-12948	1
7	<b>DISK SPRING MAIN ø88 700N</b>	<b>004-88070</b>	<b>2</b>
8	<b>TORQUE LIMITER SPRING 1500N</b>	<b>004-50150</b>	<b>1</b>
8	TORQUE LIMITER SPRING 1300N	004-50130	1
8	TORQUE LIMITER SPRING 1700N	004-50170	1
9	BALL 8.0MM	004-17801	5
10	NUT M6	999-12030605	5
11	CIRCLIP ø90mm	004-17804	1
12	DISTANCE BOLT M5x24.5	004-05245	6
13	RACING NUT M22x1	004-999221031	1
14	LOCKING RING ø88mm	004-00688	1
15	<b>RAMP INSERT 30°</b>	<b>004-00722</b>	<b>1</b>
16	STUDS M6	004-12980	5