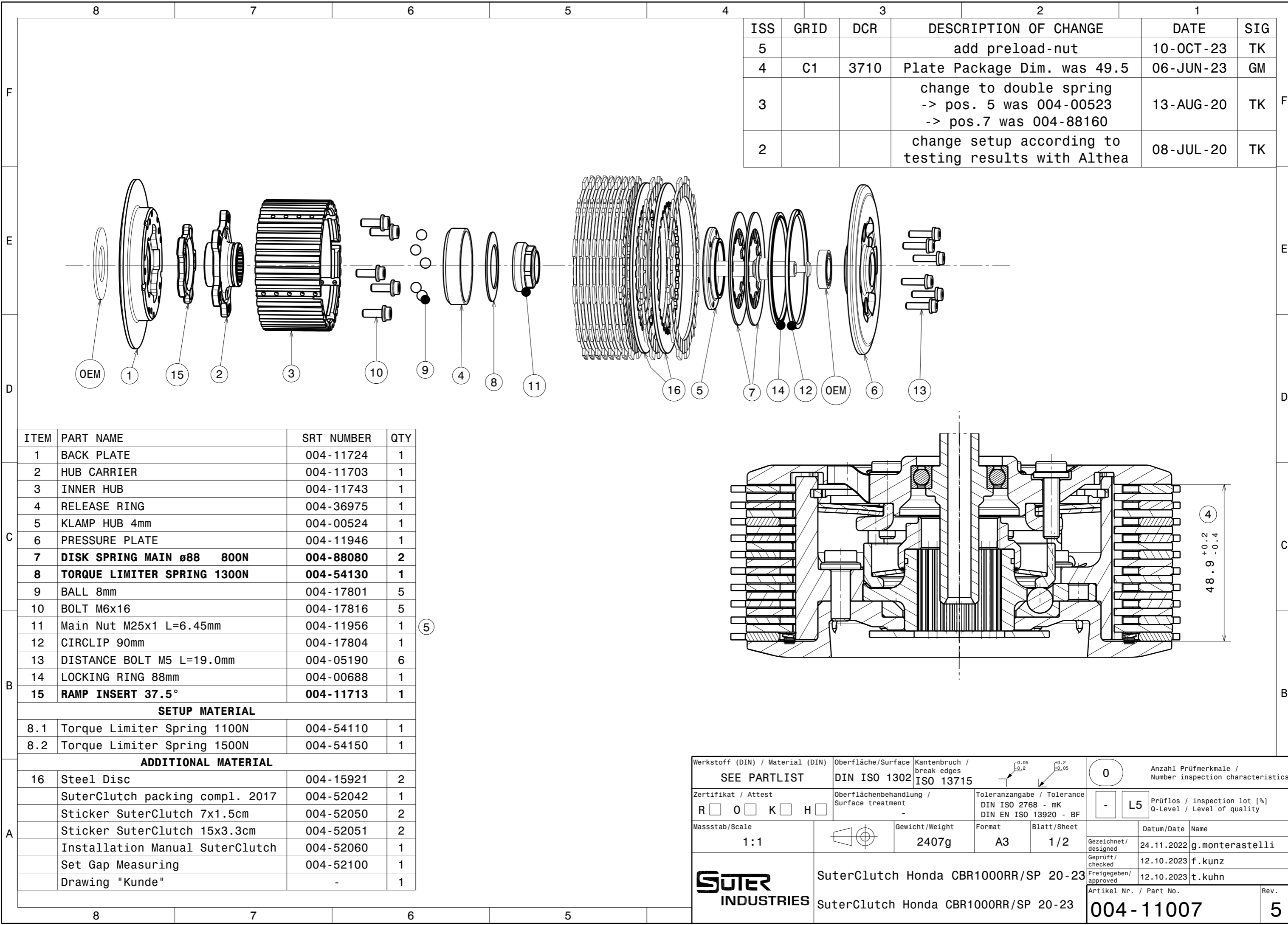
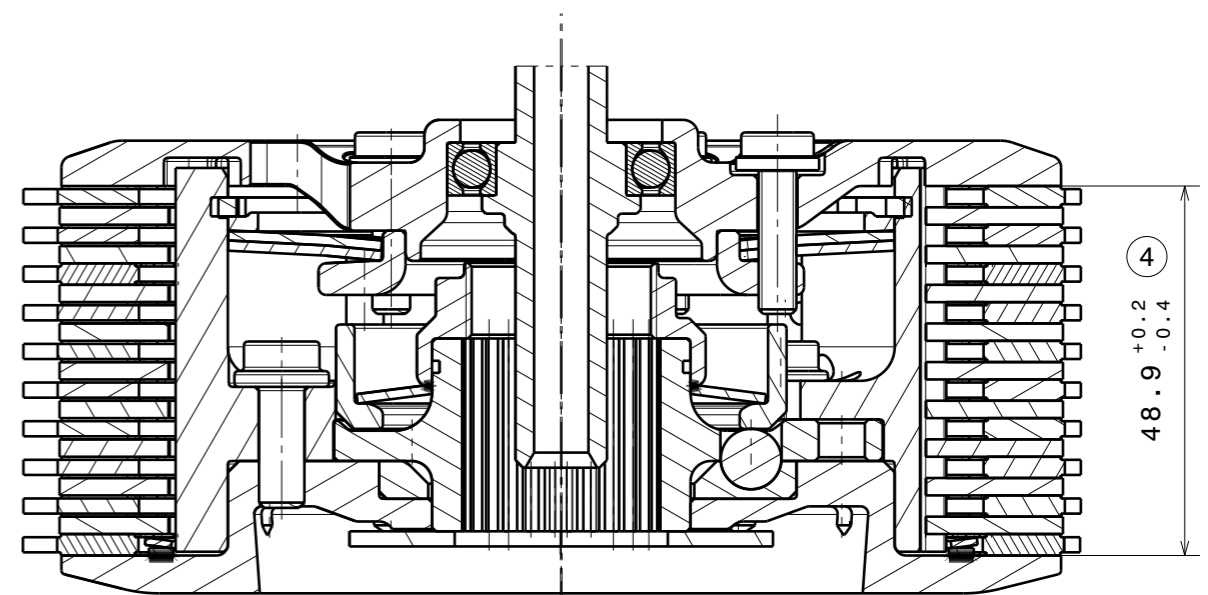


Copyright © SUTER Industries AG / Mettlenstrasse 3 / CH-8488 Turbenthal. Für dieses Dokument behalten wir uns alle Rechte vor. / We reserve all rights in connection with this document. CAD System: CATIA



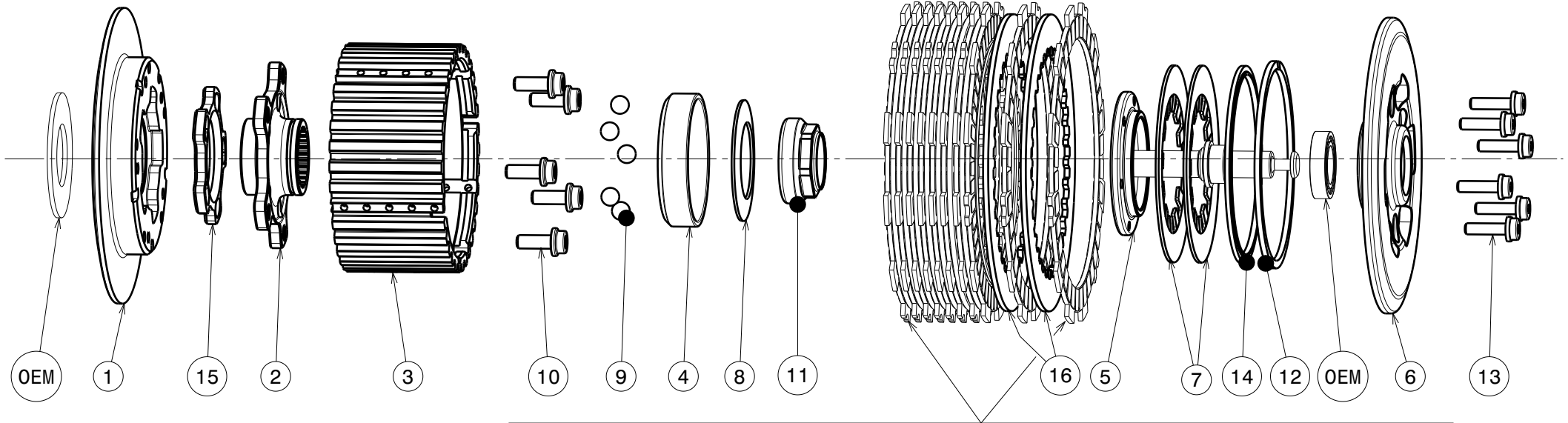
ISS	GRID	DCR	DESCRIPTION OF CHANGE	DATE	SIG
5			add preload-nut	10-OCT-23	TK
4	C1	3710	Plate Package Dim. was 49.5	06-JUN-23	GM
3			change to double spring -> pos. 5 was 004-00523 -> pos.7 was 004-88160	13-AUG-20	TK
2			change setup according to testing results with Althea	08-JUL-20	TK

ITEM	PART NAME	SRT NUMBER	QTY
1	BACK PLATE	004-11724	1
2	HUB CARRIER	004-11703	1
3	INNER HUB	004-11743	1
4	RELEASE RING	004-36975	1
5	KLAMP HUB 4mm	004-00524	1
6	PRESSURE PLATE	004-11946	1
7	DISK SPRING MAIN ø88 800N	004-88080	2
8	TORQUE LIMITER SPRING 1300N	004-54130	1
9	BALL 8mm	004-17801	5
10	BOLT M6x16	004-17816	5
11	Main Nut M25x1 L=6.45mm	004-11956	1
12	CIRCLIP 90mm	004-17804	1
13	DISTANCE BOLT M5 L=19.0mm	004-05190	6
14	LOCKING RING 88mm	004-00688	1
15	RAMP INSERT 37.5°	004-11713	1
SETUP MATERIAL			
8.1	Torque Limiter Spring 1100N	004-54110	1
8.2	Torque Limiter Spring 1500N	004-54150	1
ADDITIONAL MATERIAL			
16	Steel Disc	004-15921	2
	SuterClutch packing compl. 2017	004-52042	1
	Sticker SuterClutch 7x1.5cm	004-52050	2
	Sticker SuterClutch 15x3.3cm	004-52051	2
	Installation Manual SuterClutch	004-52060	1
	Set Gap Measuring	004-52100	1
	Drawing "Kunde"	-	1



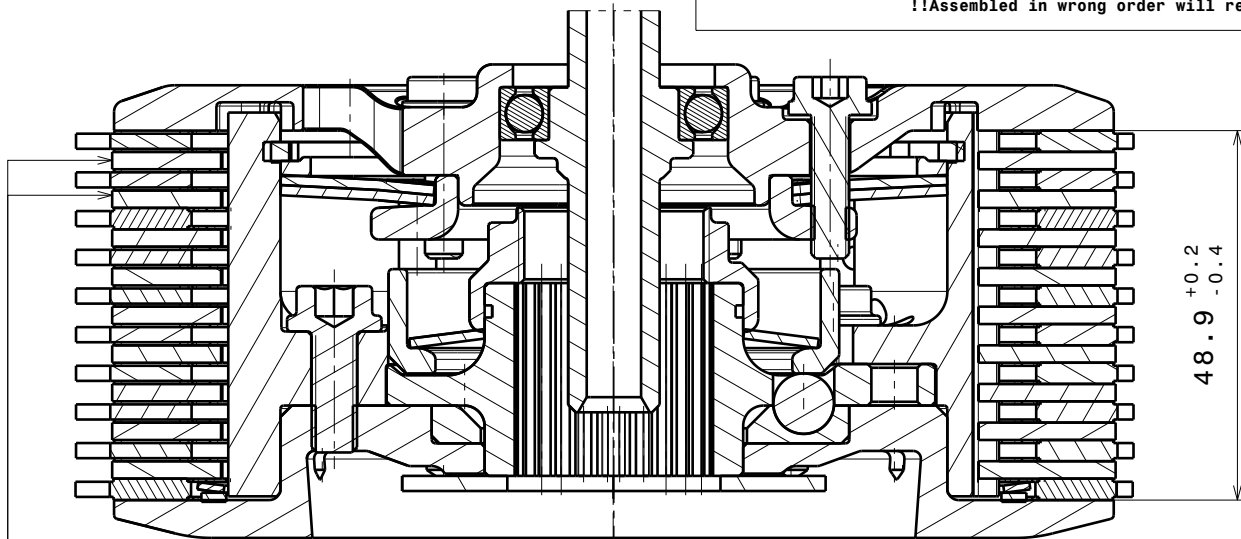
Werkstoff (DIN) / Material (DIN) SEE PARTLIST		Oberfläche/Surface DIN ISO 1302		Kantenbruch / break edges ISO 13715		Anzahl Prüfmerkmale / Number inspection characteristics 0	
Zertifikat / Attest R <input type="checkbox"/> O <input type="checkbox"/> K <input type="checkbox"/> H <input type="checkbox"/>		Oberflächenbehandlung / Surface treatment -		Toleranzangabe / Tolerance DIN ISO 2768 - mK DIN EN ISO 13920 - BF		Prüflos / inspection lot [%] Q-Level / Level of quality L5	
Massstab/Scale 1:1		Gewicht/Weight 2407g		Format A3		Blatt/Sheet 1/2	
Gezeichnet/ designed 24.11.2022		Geprüft/ checked 12.10.2023		Freigegeben/ approved 12.10.2023		Datum/Date 24.11.2022	
Name g.monterastelli		Name f.kunz		Name t.kuhn		Name t.kuhn	
SUTER INDUSTRIES		SuterClutch Honda CBR1000RR/SP 20-23		SuterClutch Honda CBR1000RR/SP 20-23		Artikel Nr. / Part No. 004-11007	
						Rev. 5	

004-11007-5 SuterClutch Honda CBR1000RR/SP 2020-23



Achten Sie auf die korrekte Reihenfolge der ersten und letzten Reibscheibe, wie sie im originalen Handbuch beschrieben wird.
Please note the correct order of the first and last friction disk as shown in the OEM manual.

!!Bei falscher Reihenfolge wird erhöhter Verschleiss an Druck- und Grundplatte auftreten!!
!!Assembled in wrong order will result in higher wear on the pressure- and backplate!!



Diese Stahlscheiben müssen durch die mitgelieferten (Pos.17) ersetzt werden
These steel disks have to be replaced with the delivered ones (Pos.17)

Das angegebene Belagpaketmass ist zwingend einzuhalten!
The plate package thickness must be strictly adhered to!

ITEM	PART NAME	SRT NUMBER	QTY
1	Back Plate	004-11724	1
2	Hub Carrier	004-11703	1
3	Inner Hub	004-11743	1
4	Release Ring	004-36975	1
5	Clamp Hub $\varnothing 69$ 4mm	004-00524	1
6	Pressure Plate	004-11946	1
7	Disk Spring Main $\varnothing 88$ 800N	004-88080	2
8	Torque Limiter Spring 1300N	004-54130	1
	Torque Limiter Spring 1100N	004-54110	1
	Torque Limiter Spring 1500N	004-54150	1
9	Ball 8mm	004-17801	5
10	Bolt M6x16	004-17816	5
11	Main Nut M25x1 L=6.45mm	004-11956	1
12	Circlip 90mm	004-17804	1
13	Distance Bolt M5 L=19.0mm	004-05190	6
14	Locking Ring 88mm	004-00688	1
15	Ramp Insert 37.5°	004-11713	1
16	Steel Disc	004-15921	2