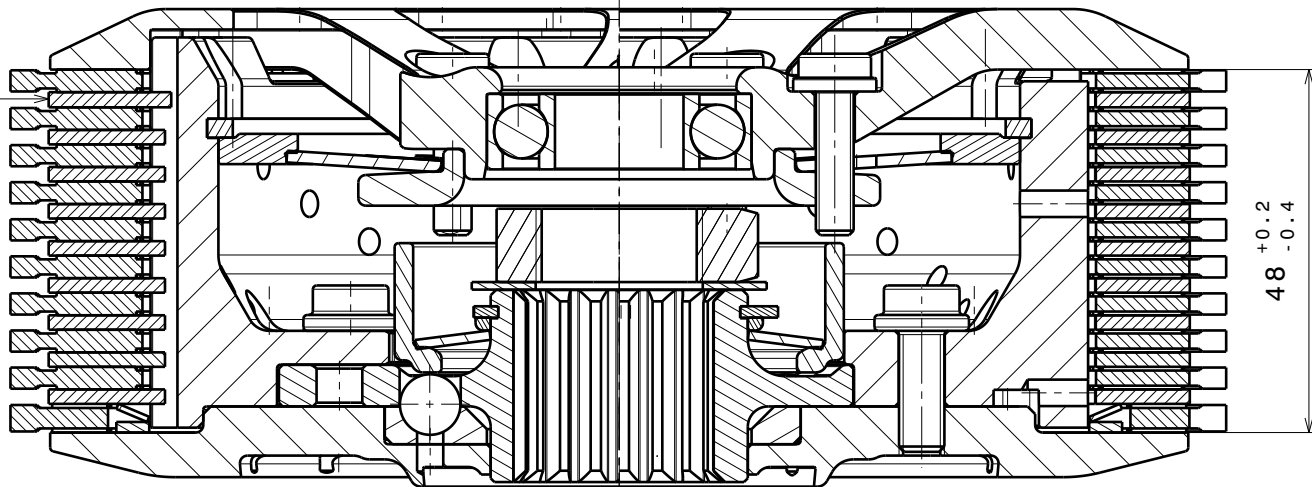
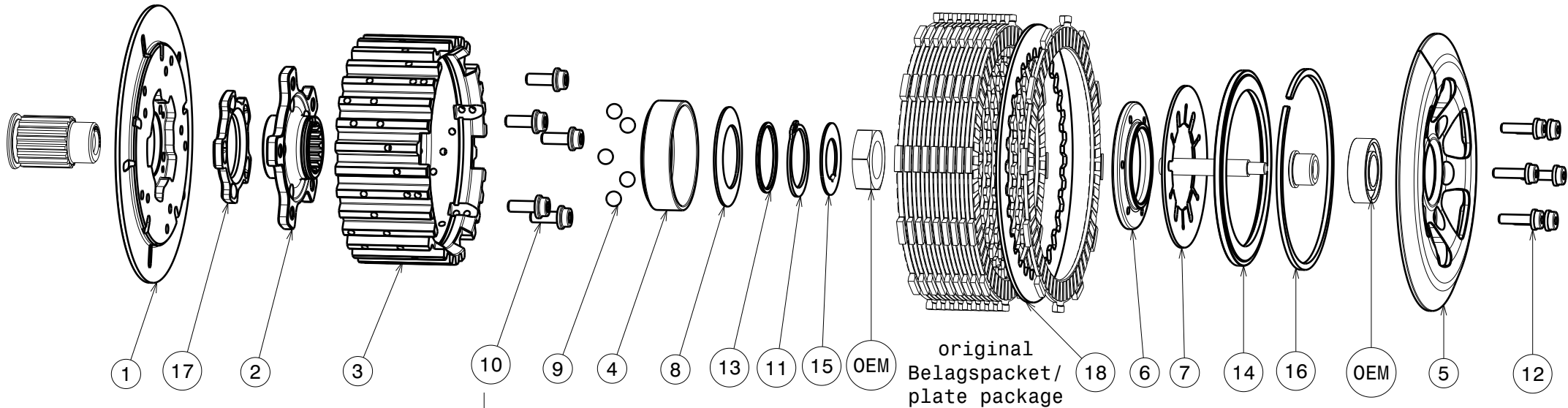


# 004-05002-1 SuterClutch KTM 1050-1290



Diese Stahlscheibe muss durch die mitgelieferte (Pos.18) ersetzt werden  
 This steel disk has to be replaced with the delivered one (Pos.18)

**Das angegebene Belagspaketmass ist zwingend einzuhalten!**  
**The plate package thickness must be strictly adhered to!**

Model	1290 Super ADV (S,R,T)	1290 Super Duke (R,GT)	1190 Adventure (R)	1190 RC8 R	1090 Adventure (R,L)	1050 Adventure
Year	2015-2020	2014-2020	2013-2016	2013-2014	2017-2019	2015-2016

Partlist: 2862			
ITEM	PART NAME	SRT NUMBER	QTY
1	Back Plate	004-05721	1
2	Hub Carrier	004-07700	1
3	Inner Hub KTM RC8	004-05740	1
4	Release Ring	004-07980	1
5	Pressure Plate	004-05941	1
6	Clamp Hub ø69 3mm	004-00523	1
7	<b>Disk Spring Main ø88 1400N</b>	<b>004-88140</b>	<b>1</b>
	<b>Torque Limiter Spring 1300N</b>	<b>004-54130</b>	<b>1</b>
8	Torque Limiter Spring 1100N	004-54110	(1)
	Torque Limiter Spring 1500N	004-54150	(1)
9	Ball 8mm	004-17801	5
10	Bolt M6x16	004-17816	5
11	Circlip 34mm	004-11801	1
12	Distance Bolt M5 L=19.0mm	004-05190	6
13	Distance Ring 34x38x1.7	004-11610	1
14	Locking Ring 106mm	004-00606	1
15	Locking Washer	004-07670	1
16	Circlip 107	004-17831	1
17	<b>Ramp Insert 35°</b>	<b>004-11712</b>	<b>1</b>
18	Steel Disc 2.0mm	004-05920	1